

# Corporate Data

---

## Contents

92	Principal Subsidiaries and Associated Companies
98	Global Network
100	Organization

---

# Principal Subsidiaries and Associated Companies

## Metal Products Business Unit

SC Grainger Co., Ltd.  
Common Stock : ¥ 2,953 millions  
Ownership : 40.34%  
Electric-commerce of MRO (maintenance, repair, and operations) products

Sumisho Tekko Hanbai Co., Ltd.  
Common Stock : ¥ 310 millions  
Ownership : 100%  
Sale of steel products

SC Material Co., Ltd.  
Common Stock : ¥ 50 millions  
Ownership : 100%  
Scrapyard for ferrous and non-ferrous metals

Sekisho Shoji Kaisha, Ltd.  
Common Stock : ¥ 44 millions  
Ownership : 50%  
Scrapyard for ferrous and non-ferrous metals

Hokkaido Shearing Kaisha, Ltd.  
Common Stock : ¥ 210 millions  
Ownership : 96.4%  
Fabrication and sale of steel products

SC Steel Trade Co., Ltd.  
Common Stock : ¥ 10 millions  
Ownership : 100%  
Sale of steel sheet

Fibercoat Co., Ltd.  
Common Stock : ¥ 150 millions  
Ownership : 64.63%  
Manufacture and sale of fiber-coated steel

SC Tubulars Co., Ltd.  
Common Stock : ¥ 50 millions  
Ownership : 100%  
Sale of specialty tubular products

Sumisho Pipe and Steel Co., Ltd.  
Common Stock : ¥ 499 millions  
Ownership : 100%  
Sale of steel piping and other steel products

Mazda Steel Co., Ltd.  
Common Stock : ¥ 60 millions  
Ownership : 51%  
Shearing, slitting, and blanking of steel sheet

Sumisho Metalex Corporation  
Common Stock : ¥ 1,170 millions  
Ownership : 69.62%  
Sale of non-ferrous metal products, materials for home heat solution

Summit Aluminum Ltd.  
Common Stock : ¥ 400 millions  
Ownership : 79.06%  
Production of aluminum alloy ingots

Alcut Co., Ltd.  
Common Stock : ¥ 96 millions  
Ownership : 65%  
Shearing, slitting, and blanking of aluminum coils, sheets, and circles

SC Steel Investment, Inc. (U.S.)  
Common Stock : US\$ 22,408 thousands  
Ownership : 100%  
Investment in Arkansas Steel Associates

Asian Steel Company Ltd. (Singapore)  
Common Stock : S\$ 41,176 thousands  
Ownership : 100%  
Investment in steel service centers and other operations in Asia

Pandai Steel Industry Pte. Ltd. (Singapore)  
Common Stock : S\$ 8,000 thousands  
Ownership : 100%  
Shearing, slitting, and sale of steel plates

Petro-Summit Mechanical Co., Ltd. (Vietnam)  
Common Stock : US\$ 3,674 thousands  
Ownership : 51%  
Manufacture of steel drum

Hanoi Steel Center Co., Ltd. (Vietnam)  
Common Stock : US\$ 3,000 thousands  
Ownership : 100%  
Shearing, slitting, and sale of steel plates

Saigon Steel Service & Processing Co. (Vietnam)  
Common Stock : DON 25,769,000 thousands  
Ownership : 50%  
Shearing, slitting, and sale of steel plates

P.T. Super Steel Karawang (Indonesia)  
Common Stock : US\$ 4,000 thousands  
Ownership : 75%  
Shearing, slitting, and sale of steel plates

P.T. Super Steel Indah (Indonesia)  
Common Stock : RP 3,573,000 thousands  
Ownership : 40.02%  
Shearing, slitting, and sale of steel plates

CS Metal Co., Ltd. (Thailand)  
Common Stock : BAHT 360,000 thousands  
Ownership : 47.33%  
Shearing, slitting, and sale of steel plates

Thai Steel Service Center Ltd. (Thailand)  
Common Stock : BAHT 216,000 thousands  
Ownership : 64.6%  
Shearing, slitting, and sale of steel plates

United Steel Center Manila Inc. (Philippines)  
Common Stock : P.PESO 300,000 thousands  
Ownership : 90%  
Investment in steel service center

Mactan Steel Center Inc. (Philippines)  
Common Stock : P.PESO 70,000 thousands  
Ownership : 90%  
Shearing, slitting, and sale of steel plates

Calamba Steel Center Inc. (Philippines)  
Common Stock : P.PESO 281,000 thousands  
Ownership : 90%  
Shearing, slitting, and sale of steel plates

Sumiputeh Steel Centre Sdn. Bhd. (Malaysia)  
Common Stock : MS 12,000 thousands  
Ownership : 39%  
Shearing, slitting, and sale of steel plates

S.Y. Metal Ltd. (Hong Kong)  
Common Stock : HK\$ 80,000 thousands  
Ownership : 98.75%  
Investment in steel service center, sale of steel materials

Dong Guan S.Y. Metal Ltd. (China)  
Common Stock : RMB¥ 50,968 thousands  
Ownership : 80%  
Shearing, slitting, and sale of steel plates

Sumisho Steel Corporation (Hong Kong) Limited (Hong Kong)  
Common Stock : HK\$ 23,000 thousands  
Ownership : 100%  
Investment in steel service center, sale of steel materials

Zhongshan Nomura Steel Products Co., Ltd. (China)  
Common Stock : US\$ 1,700 thousands  
Ownership : 100%  
Shearing, slitting, and sale of steel plates

Wuxi Meifeng Metal Products Co., Ltd. (China)  
Common Stock : US\$ 4,000 thousands  
Ownership : 81%  
Shearing, slitting, and sale of steel plates

Shanghai Summit Metal Products Co., Ltd. (China)  
Common Stock : US\$ 6,000 thousands  
Ownership : 80%  
Shearing, slitting, and sale of steel plates

Tianjin Hua Zhu Metal Products Co., Ltd. (China)  
Common Stock : US\$ 5,000 thousands  
Ownership : 53.9%  
Shearing, slitting, and sale of steel plates

Mason Metal Industry Co., Ltd. (Taiwan)  
Common Stock : NT\$ 500,000 thousands  
Ownership : 99.99%  
Shearing, slitting, and sale of steel plates

Myanmar Sai Steel Industry Co., Ltd. (Myanmar)  
Common Stock : KYAT 22,800 thousands  
Ownership : 51%  
Manufacture and sale of galvanized plates

Shanghai Hi-Tec Metal Products Co., Ltd. (China)  
Common Stock : US\$ 4,800 thousands  
Ownership : 90%  
Manufacture and sale of metal-processing products

Thai Special Wire Co., Ltd. (Thailand)  
Common Stock : BAHT 160,000 thousands  
Ownership : 73.5%  
Manufacture and sale of PC wire and strand

SC Pipe Services Inc. (U.S.)  
Common Stock : US\$ 27,411 thousands  
Ownership : 100%  
Investment in VAMPTS Co.

SC Metal Pty. Ltd. (Australia)  
Common Stock : A\$ 23,208 thousands  
Ownership : 100%  
Investment in aluminum smelting operation in Australia

CS Non-Ferrous Center Co., Ltd. (Thailand)  
Common Stock : BAHT 110,000 thousands  
Ownership : 42%  
Shearing, slitting, and sale of non-ferrous metal sheets

## Transportation & Construction Systems Business Unit

Oshima Shipbuilding Co., Ltd.  
Common Stock : ¥ 56,000 millions  
Ownership : 34.11%  
Shipbuilding

Sumisho Auto Leasing Corporation  
Common Stock : ¥ 2,751 millions  
Ownership : 52.9%  
Leasing of motor vehicles

Sumisho Pocket Finance Corporation  
Common Stock : ¥ 1,000 millions  
Ownership : 50%  
Consumer Finance

R.B.I.  
Common Stock : ¥ 490 millions  
Ownership : 100%  
Automotive e-business operator

Blue-Tech Corporation  
Common Stock : ¥ 250 millions  
Ownership : 100%  
Rental of aerial work platforms

Sumisho Aero-Systems Corporation  
Common Stock : ¥ 70 millions  
Ownership : 100%  
Sale of aerospace equipment

Sumisho Machinery Trade Corporation  
Common Stock : ¥ 450 millions  
Ownership : 100%  
Trading of machinery and equipment

Sumisho Marine Co., Ltd.  
Common Stock : ¥ 30 millions  
Ownership : 100%  
Central management of Sumitomo Corp.'s loans and shipping fleet

Sumisho Aircraft Asset Management B.V. (Netherlands)  
Common Stock : US\$ 376 thousands  
Ownership : 100%  
Aircraft leasing

P.T. Oto Multiartha (Indonesia)  
Common Stock : RP 325,000,000 thousands  
Ownership : 95.96%  
Financing of vehicles



Media Saitama Co., Ltd. Common Stock : ¥ 2,993 millions J-COM's ownership: 50.38% Cable television operation	@NetHome Co., Ltd. Common Stock : ¥ 7,800 millions Ownership SC : 12.56% J-COM: 87.44% Cable-Internet service provider	Sumitronics Asia Holding Pte. Ltd. (Singapore) Common Stock : S\$ 15,269 thousands Ownership : 100% Management and operation of Sumitronics group
Tsuchiura Cable Television Co., Ltd. Common Stock : ¥ 1,500 millions J-COM's ownership: 70% Cable television operation	AJCC Corporation Common Stock : ¥ 400 millions Ownership : 57.5% Leasing of cable television converters	SC Electronics Korea Ltd. (Korea) Common Stock : W 1,000,000 thousands Ownership : 100% Sale of electronics products and parts
Kisarazu Cable Television Co., Ltd. Common Stock : ¥ 1,800 millions J-COM's ownership: 81.69% Cable television operation	Cable System Engineering Corporation Common Stock : ¥ 490 millions Ownership : 40% Engineering and construction of CATV transmission networks and station equipment	Technoclean Philippines, Inc. (Philippines) Common Stock : P.PESO 125,622 thousands Ownership : 100% High-tech cleaning service of clean room garments
Cable Network Yachiyo Co., Ltd. Common Stock : ¥ 1,600 millions J-COM's ownership: 58.66% Cable television operation	Billingsoft Japan Co., Ltd. Common Stock : ¥ 100 millions Ownership : 49% Development and sale of CATV billing software	Sumitronics Shanghai Co., Ltd. (China) Common Stock : RMBY 3,459 thousands Ownership : 100% Sale of electronics products and parts
Super Network U Inc. Common Stock : ¥ 3,395 millions J-COM's ownership: 59.09% Cable television operation	JSAT Corporation Common Stock : ¥ 53,769 millions Ownership : 13.6% Satellite communications	SC Venture, Inc. (U.S.) Common Stock : US\$ 23,996 thousands Ownership : 100% Investment business
Izumi CATV Co., Ltd. Common Stock : ¥ 676 millions J-COM's ownership: 67.31% Cable television operation	SKY Perfect Communications Inc. Common Stock : ¥ 139,456 millions Ownership : 3.1% Satellite digital broadcasting	<b>Chemical Business Unit</b>
J-COM Gunma Co., Ltd. Common Stock : ¥ 1,100 millions J-COM's ownership: 100% Cable television operation	AlphaBridge Corporation Common Stock : ¥ 337 millions Ownership : 65.7% Digital content delivery storage/services over broadband network	Sumitomo Shoji Chemicals Co., Ltd. Common Stock : ¥ 450 millions Ownership : 100% Sale of chemical products
Hokusetsu Cable Net Co., Ltd. Common Stock : ¥ 2,000 millions J-COM's ownership: 55% Cable television operation	Sumisho Computer Systems Corporation Common Stock : ¥ 21,152 millions Ownership : 51.02% Data processing services; development and sale of computer software	Sumisho Air Water Co., Ltd. Common Stock : ¥ 480 millions Ownership : 20% Manufacturing and sales of hydrogen and other industrial gases
J-COM Kansai Co., Ltd. Common Stock : ¥ 18,478 millions J-COM's ownership: 84.15% Cable television operation	Sumisho Electronics Co., Ltd. Common Stock : ¥ 7,001 millions Ownership : 61.88% Sale of office computers, systems, and software	Summit Medi-Chem, Ltd. Common Stock : ¥ 138 millions Ownership : 94% Sale of pharmaceuticals and industrial chemicals
Cablenet Kobe Ashiya Co., Ltd. Common Stock : ¥ 2,900 millions J-COM's ownership: 52.63% Cable television operation	G-Plan Inc. Common Stock : ¥ 440 millions Ownership : 35% Point e-market place	Summit Pharmaceuticals International Corporation Common Stock : ¥ 480 millions Ownership : 80% A comprehensive provider of innovative and biotechnology oriented pharmaceutical & diagnostic R&D related services, fund management
Cable Net Shimonoseki Co., Ltd. Common Stock : ¥ 1,000 millions J-COM's ownership: 50% Cable television operation	SC Venture Partners & Co. Common Stock : ¥ 50 millions Ownership : 100% Consulting of investment and fund management	Summit Agro International, Ltd. Common Stock : ¥ 320 millions Ownership : 100% Sale of agricultural chemicals, fertilizers, and other materials; sale and leasing of related equipment
J-COM Kitakyushu Co., Ltd. Common Stock : ¥ 3,602 millions J-COM's ownership: 81.65% Cable television operation	SC Semicon Technology Corporation Common Stock : ¥ 300 millions Ownership : 85% Marketing and maintenance of, and consulting for semiconductor manufacturing systems	Sumitomo Shoji Plastics Co., Ltd. Common Stock : ¥ 900 millions Ownership : 100% Sale and trade of plastics
Cablevision 21 Inc. Common Stock : ¥ 3,166 millions J-COM's ownership: 69.47% Cable television operation	Sumitronics Corporation Common Stock : ¥ 400 millions Ownership : 100% Sale of electronics products and parts	Summit Minerals (Malaysia) Sdn. Bhd. (Malaysia) Common Stock : M\$ 6,950 thousands Ownership : 59.93% Pulverization, processing, and sale of feldspar, etc.
Fukuoka Cable Network Co., Ltd. Common Stock : ¥ 2,000 millions J-COM's ownership: 45% Cable television operation	Pleomart, Inc. Common Stock : ¥ 1,100 millions Ownership : 27.27% Intermediate commodities e-market place provider	Interacid Trading S.A. (Switzerland) Common Stock : S.FR 20,000 thousands Ownership : 85% International trade of sulfur and sulfuric acid
J-COM Kanto Co., Ltd. Common Stock : ¥ 34,222 millions J-COM's ownership: 100% Cable television operation	WAM!NET Japan K.K. Common Stock : ¥ 200 millions Ownership : 63.51% Digital graphics data transfer service	Summit Agro Europe Ltd. (U.K.) Common Stock : EURO 22,919 thousands Ownership : 100% Investment in agricultural chemicals in Europe
J-COM Sapporo Co., Ltd. Common Stock : ¥ 8,800 millions J-COM Kanto's ownership: 81.94% Cable television operation	Sumitronics Inc. (U.S.) Common Stock : US\$ 7,800 thousands Ownership : 68.52% Sale of electronics equipments and parts	Cantex Inc. (U.S.) Common Stock : US\$ 15,000 thousands Ownership : 100% Manufacture and sale of polyvinyl chloride pipes
Chofu Cable Inc. Common Stock : ¥ 2,525 millions Ownership : 30% Cable television operation	Sumitronics Taiwan Co., Ltd. (Taiwan) Common Stock : NT\$ 10,000 thousands Ownership : 100% Sale of electronics materials and parts	New Port Bulk Terminal Sdn. Bhd. (Malaysia) Common Stock : M\$ 2,000 thousands Ownership : 70% Storage, transportation, and sale of liquid chemicals
Kansai Multimedia Service Co., Ltd. Common Stock : ¥ 2,000 millions Ownership SC : 6.5% J-COM : 25.75% Cable-Internet service provider		

## Mineral Resources & Energy Business Unit

Sumisho Reftech Co., Ltd.  
Common Stock : ¥ 200 millions  
Ownership : 100%  
Manufacture and sale of technical service for fireproof materials; import and sale of steel-related materials and equipment

Nusa Tenggara Mining Corporation  
Common Stock : ¥ 14,000 millions  
Ownership : 74.28%  
Investment in and financing of the Batu Hijau copper/gold mine development project in Indonesia

Sumisho Oil Corporation  
Common Stock : ¥ 500 millions  
Ownership : 100%  
Sale of petroleum products and operation of gasoline stations

Sumisho LPG Holdings Co., Ltd.  
Common Stock : ¥ 115 millions  
Ownership : 100%  
Planning basic strategy of LPG business

Sumisho Ekika Gas Kaisha, Ltd.  
Common Stock : ¥ 495 millions  
Sumisho LPG Holdings' Ownership: 100%  
Sale and distribution of LPG in Honshu, Shikoku and Kyushu

Sumisho Daiichi Sekiyu Gas Kaisha, Ltd.  
Common Stock : ¥ 250 millions  
Sumisho LPG Holdings' Ownership: 100%  
Sale and distribution of LPG in Hokkaido

LNG Japan Corporation  
Common Stock : ¥ 8,002 millions  
Ownership : 50%  
Trading of LNG, investment and financing related to LNG business

Nippon Nuclear Service Corporation  
Common Stock : ¥ 40 millions  
Ownership : 100%  
Nuclear fuel transport and related services and sale of related equipment

Summit Energy Corporation  
Common Stock : ¥ 50 millions  
Ownership : 70%  
Electricity retailing business

## Power producers

Summit Amagasaki Power Corporation  
Common Stock : ¥ 350 millions  
Ownership : 100%  
Gas-fired power generation and supply of electricity

Summit Wind Power Sakata Corporation  
Common Stock : ¥ 477 millions  
Ownership : 100%  
Wind power generation and supply of electricity

Summit Onahama S Power Corporation  
Common Stock : ¥ 495 millions  
Ownership : 65%  
Coal-fired power generation, supply of electricity and thermal energy

Summit Myojo Power Corporation  
Common Stock : ¥ 495 millions  
Ownership : 65%  
Wood chip and coal fired power generation, and supply of electricity

Sumisho Coal Australia Pty. Ltd. (Australia)  
Common Stock : A\$ 60,000 thousands  
Ownership : 100%  
Investment in Oaky Creek coal mine and other mines

SC Mineral Resources Pty. Ltd. (Australia)  
Common Stock : A\$ 20,500 thousands  
Ownership : 100%  
Investment in the North Parks copper mine in Australia

SC Minerals America, Inc. (U.S.)  
Common Stock : US\$ 1 thousand  
Ownership : 100%  
Development of non-ferrous metals exploration and investment in SMMA for the Morenci copper mine in the U.S. and the La Candelaria copper mine in Chile

## Consumer Goods & Service Business Unit

Sumisho Nosan Kaisha, Ltd.  
Common Stock : ¥ 55 millions  
Ownership : 100%  
Sale of fertilizers and agriculture-related materials

Nittoh Bion Co., Ltd.  
Common Stock : ¥ 1,345 millions  
Ownership : 51.28%  
Manufacture and sale of fertilizer

Sumisho Fresh Meat Co., Ltd.  
Common Stock : ¥ 100 millions  
Ownership : 100%  
Sale of beef, pork, and processed meats, including chicken

Chiba Kyodo Silo Co., Ltd.  
Common Stock : ¥ 708 millions  
Ownership : 50.5%  
Operation of silo facility and handling of grain, such as wheat, barley and corn

Sumisho Feed Co., Ltd.  
Common Stock : ¥ 10 millions  
Ownership : 100%  
Sale of hay and feedstuff

Summit Oil Mill Co., Ltd.  
Common Stock : ¥ 97 millions  
Ownership : 51%  
Manufacture and sale of vegetable oil and oil meal

SC Foods Co., Ltd.  
Common Stock : ¥ 495 millions  
Ownership : 100%  
Import, development, and sale of foodstuffs

Shinko Sugar Co., Ltd.  
Common Stock : ¥ 1,495 millions  
Ownership : 66.6%  
Sugar refining

Sumifru Corporation  
Common Stock : ¥ 150 millions  
Ownership : 100%  
Import and sale of fruits and vegetables

Allied Co., Ltd.  
Common Stock : ¥ 60 millions  
Ownership : 100%  
Import and sale of flowers

ST Agri-Products Corp.  
Common Stock : ¥ 710 millions  
Ownership : 72.78%  
Import and sale of Chinese fresh and processed vegetables

Sumisho Interior International Inc.  
Common Stock : ¥ 100 millions  
Ownership : 100%  
Space & interior designing and installation, import, export and sale of consumer goods, such as furniture and carpet for residential and contract use

Summit Inc.  
Common Stock : ¥ 3,920 millions  
Ownership : 100%  
Supermarket chain

Summit Colmo, Inc.  
Common Stock : ¥ 100 millions  
Ownership : 100%  
General merchandise store chain

Mammy Mart Corporation  
Common Stock : ¥ 2,660 millions  
Ownership : 24.36%  
Supermarket chain

Sumisho Drugstores Inc.  
Common Stock : ¥ 160 millions  
Ownership : 100%  
Drugstore chain

Otto-Sumisho Inc.  
Common Stock : ¥ 7,150 millions  
Ownership : 49%  
Mail-order business with OTTO GmbH & Co. KG, Germany

Eddie Bauer Japan Inc.  
Common Stock : ¥ 3,000 millions  
Ownership : 34.3%  
Sale of Eddie Bauer brand casual wears & goods through mail-order & retailstore chain

Club Createurs Beaute Japon, Inc.  
Common Stock : ¥ 1,150 millions  
Ownership : 29.4%  
Mail-order business of brand cosmetics offered by the top French creators such as agnes b. and Michel Klein

Sumisho Hermes General Service Inc.  
Common Stock : ¥ 400 millions  
Ownership : 51%  
Fulfillment service provider for mail-order business

Sumisho Gourmet Coffee Inc.  
Common Stock : ¥ 150 millions  
Ownership : 100%  
Italian cafe chain

Coach Japan, Inc.  
Common Stock : ¥ 50 millions  
Ownership : 50%  
Sale of Coach brand handbags and accessories

Oriental Diamond, Inc.  
Common Stock : ¥ 270 millions  
Ownership : 100%  
Wholesale and retail sales of polished diamonds and jewelry products

Taisei Coins Corporation  
Common Stock : ¥ 200 millions  
Ownership : 80%  
Sale of the numismatic coins & commemorative coins covering all over the world

Sumifert Sdn. Bhd. (Malaysia)  
Common Stock : M\$ 500 thousands  
Ownership : 50%  
Import and sale of fertilizers

Summit-Quinphos (NZ) Ltd. (New Zealand)  
Common Stock : NZ\$ 1,818 thousands  
Ownership : 60%  
Import and sale of fertilizers in New Zealand

Summit Specialty Oil Co., Inc. (U.S.)  
Common Stock : US\$ 3,716 thousands  
Ownership : 100%  
Contracting of vegetable oil crushing and refining in the U.S.

Pressa Holding, Inc. (U.S.)  
Common Stock : US\$ 2,460 thousands  
Ownership : 100%  
Investment in hay compressing operation in the U.S.

SC Agri Produce Pty Ltd (Australia)  
Common Stock : A\$ 1,500 thousands  
Ownership : 100%  
Investment in hay compressing operation in Australia

Sumitex Hong Kong Limited (Hong Kong)  
Common Stock : HK\$ 10,000 thousands  
Ownership : 100%  
Sale of textile products and materials

Dalian Huayou Knitting Co., Ltd. (China)  
Common Stock : RMB¥ 11,000 thousands  
Ownership : 100%  
Manufacture and sale of tussah silk sweaters



## Materials & Real Estate Business Unit

### S.C. Cement Co., Ltd.

Common Stock : ¥200 millions  
Ownership : 100%  
Sale of cement, ready-mixed concrete and concrete products

### Sumisho & Mitsubussan Kenzai Co., Ltd.

Common Stock : ¥2,500 millions  
Ownership : 50%  
Sale of building materials

### IG Kogyo Co., Ltd.

Common Stock : ¥253 millions  
Ownership : 44.3%  
Manufacture and sale of insulated metal panels for roofing and walls

### Sumisho Paper Co., Ltd.

Common Stock : ¥400 millions  
Ownership : 100%  
Sale of pulp, wastepaper, paper, paperboard and packaging materials

### Daiichi Packaging Co., Ltd.

Common Stock : ¥271 millions  
Ownership : 61.78%  
Manufacture and sale of corrugated carton boxes (flexography printed and offset printed)

### SC Tire International Co., Ltd.

Common Stock : ¥50 millions  
Ownership : 100%  
Import, export and sales of tires and tubes

### Sumisho Building Management Co., Ltd.

Common Stock : ¥100 millions  
Ownership : 100%  
Management and operation of office buildings and shopping centers

### SC Properties Co., Ltd.

Common Stock : ¥3,400 millions  
Ownership : 100%  
Ownership and leasing of office buildings and other real estate

### Yokohama City Management Co., Ltd.

Common Stock : ¥100 millions  
Ownership : 25.5%  
Management, operation, and leasing of multipurpose facilities in Minato Mirai 21

### Harumi Corporation

Common Stock : ¥110 millions  
Ownership : 19.44%  
Management of Harumi Island Triton Square

### Sumisho Urban Kaihatsu Co., Ltd.

Common Stock : ¥100 millions  
Ownership : 100%  
Planning, development, management, and operation of shopping centers; microbrewery

### Osaka Hokko Development Co., Ltd.

Common Stock : ¥40 millions  
Ownership : 100%  
Ownership, leasing, management and operations of retail facilities and office buildings

### Sumisho Tatemono Co., Ltd.

Common Stock : ¥400 millions  
Ownership : 100%  
Sale and management of residential properties; house remodeling

### SC Building Management Corporation

Common Stock : ¥40 millions  
Ownership : 60%  
Management and operation of office buildings in Kansai region

### Reibi Corporation

Common Stock : ¥30 millions  
Ownership : 52.16%  
Management of buildings in Kansai region

### Sumisho Estem Corporation

Common Stock : ¥350 millions  
Ownership : 100%  
Sale and management of residential properties in Kansai region

### Yasato Kosan Kaisha, Ltd.

Common Stock : ¥90 millions  
Ownership : 100%  
Owning and operating of golf course; Summit Golf Club (Ibaraki Pref.)

### Sumisho Development Co., Ltd. (Thailand)

Common Stock : BAHT 15,000 thousands  
Ownership : 98.83%  
Leasing of apartment and office buildings

### P.T. Sumitmas Property (Indonesia)

Common Stock : US\$ 12,500 thousands  
Ownership : 40%  
Leasing of office buildings

## Financial & Logistics Business Unit

### Sumisho Financial Service Co., Ltd.

Common Stock : ¥100 millions  
Ownership : 100%  
Financial services

### SC Bio Capital Co., Ltd.

Common Stock : ¥60 millions  
Ownership : 100%  
Investment funds

### Sumisho Materials Corporation

Common Stock : ¥200 millions  
Ownership : 100%  
Trading of precious metals and other products

### All Trans Co., Ltd.

Common Stock : ¥200 millions  
Ownership : 100%  
Warehousing and distribution services

### Sumitras (Japan) Corporation

Common Stock : ¥400 millions  
Ownership : 100%  
Global logistics provider

### Sumisho Logistics Co., Ltd.

Common Stock : ¥150 millions  
Ownership : 100%  
Logistics service provider

### Bluewell Corporation

Common Stock : ¥125 millions  
Ownership : 100%  
Agent for casualty insurance and life insurance

### Summit Air Service Corporation

Common Stock : ¥100 millions  
Ownership : 100%  
Travel agency

### Sumisho Capital Management Co. (Cayman)

Common Stock : ¥200 millions  
Ownership : 100%  
Investment advisory

### Sumitomo Corporation Equity Asia Limited (Hong Kong)

Common Stock : US\$ 5,000 thousands  
Ownership : 100%  
Private equity investment in Asia

### Nava Nakorn Distribution Centre Co., Ltd. (Thailand)

Common Stock : BAHT 120,000 thousands  
Ownership : 53.08%  
Warehousing and distribution services

### P.T. Indo Summit Logistics (Indonesia)

Common Stock : US\$ 5,480 thousands  
Ownership : 81.32%  
Warehousing and distribution services

### Dragon Logistics Co., Ltd. (Vietnam)

Common Stock : DON 41,602,000 thousands  
Ownership : 27%  
Warehousing and distribution services

### AR Summit L.L.C. (UAE)

Common Stock : DH 11,000 thousands  
Ownership : 25%  
Warehousing and distribution services

### Summit Logitech Korea, Limited (Korea)

Common Stock : W 1,500,000 thousands  
Ownership : 75%  
Warehousing and distribution services

### Shanghai Huayou International Forwarding Co., Ltd. (China)

Common Stock : RMBY 16,570 thousands  
Ownership : 25%  
Warehousing and distribution services

### Shanghai Sumisho-ADP International Forwarding Co., Ltd. (China)

Common Stock : US\$ 1,100 thousands  
Ownership : 70%  
Warehousing and distribution services

### Fuzhu Logistics (Shenzhen) Co., Ltd. (China)

Common Stock : RMBY 5,304 thousands  
Ownership : 100%  
Warehousing and distribution services

### Tianjin Sumisho Logistics Co., Ltd. (China)

Common Stock : US\$ 1,000 thousands  
Ownership : 100%  
Warehousing and distribution services

### Shanghai Dazhong Sagawa Logistics Co., Ltd. (China)

Common Stock : RMBY 34,928 thousands  
Ownership : 24.5%  
Door-to-Door delivery services

### Wuxi Sumisho Hi-tech Logistics Co., Ltd. (China)

Common Stock : US\$ 5,000 thousands  
Ownership : 50%  
Warehousing and distribution services

### Bluewell Insurance (Singapore) Pte. Ltd. (Singapore)

Common Stock : S\$ 1,200 thousands  
Ownership : 91%  
Captive insurance company

### Thang Long Industrial Park Corporation (Vietnam)

Common Stock : DON 331,490,000 thousands  
Ownership : 58%  
Development, sales, and operation of industrial estate in Vietnam

### P.T. East Jakarta Industrial Park (Indonesia)

Common Stock : US\$ 8,550 thousands  
Ownership : 60%  
Sales, operation, and maintenance of industrial estate in Indonesia

## Domestic

### Fukusaki Coil Center Company, Ltd.

Common Stock : ¥300 millions  
Ownership : 90%  
Processing and sale of steel sheets

### Sumisho Steel Sheets Works Co., Ltd.

Common Stock : ¥462 millions  
Ownership : 89.18%  
Fabrication and sale of steel products

### Kansai Stainless Corp.

Common Stock : ¥100 millions  
Ownership : 60%  
Processing of stainless steel sheets

### Sumisho Iron & Steel Co., Ltd.

Common Stock : ¥100 millions  
Ownership : 90%  
Sale of specialty steel products

### Daiei Steel Pipe Co., Ltd.

Common Stock : ¥30 millions  
Ownership : 99.94%  
Sale of steel tubular products, especially seamless type

### Nippon Katan Co., Ltd.

Common Stock : ¥886 millions  
Ownership : 39.85%  
Manufacture and sale of hardware for transmitters and automotive parts

Sumisho Textile Company, Ltd. Common Stock : ¥ 350 millions Ownership : 100% Processing and sale of textile goods	Overseas	Sumitrans Corporation (U.S.) Common Stock : US\$ 3,082 thousands Ownership : 100% International intermodal transport
Tortoise Co., Ltd. Common Stock : ¥ 50 millions Ownership : 100% Processing and sale of interior goods and home furnishing to consumers' cooperatives	AB Tube Processing, Inc. (U.S.) Common Stock : US\$ 2,600 thousands Ownership : 100% Tube processing for airbag inflators	Presidio Venture Partners, L.L.C. (U.S.) Common Stock : US\$ 79,176 thousands Ownership : 100% Investments in IT ventures
Sumisho Montblanc Co., Ltd. Common Stock : ¥ 80 millions Ownership : 87.5% Processing and sale of work uniforms and related clothing products	Michigan Steel Processing, Inc. (U.S.) Common Stock : US\$ 12,284 thousands Ownership : 100% Steel service center (slitting and blanking of steel sheet for automotive industry)	Summit Motor Management, Inc. (U.S.) Common Stock : US\$ 19,463 thousands Ownership : 100% Holding and management company of automotive dealerships
SC Machinex Kobe Corporation Common Stock : ¥ 50 millions Ownership : 100% Sale of machinery and equipment	Servilamina Summit Mexicana S.A. de C.V. (Mexico) Common Stock : US\$ 12,000 thousands Ownership : 100% Steel service center (processing and sale of steel sheets)	Pressa Agri GP (U.S.) Common Stock : US\$ 2,835 thousands Ownership : 100% Sale of hay
Tamashima Sports Plaza Co., Ltd. Common Stock : ¥ 150 millions Ownership : 85% Sports club	Distributor Metals Corporation (U.S.) Common Stock : US\$ 372 thousands Ownership : 100% Sale of stainless steel materials	Geo Focus LLC (U.S.) Common Stock : US\$ 3,800 thousands Ownership : 100% Development and sale of train tracking system
Summit Wool Spinners Limited (New Zealand) Common Stock : NZ\$ 10,000 thousands Ownership : 100% Manufacture and sale of wool yarn for carpets	Premier Pipe, L.P. (U.S.) Common Stock : US\$ 3,501 thousands Ownership : 100% Investment in Total Premier Service and pipe stocking	Summit Biotech Inc. (U.S.) Common Stock : US\$ 1,300 thousands Ownership : 100% Business development and investment in biotech industry
Sumisho Material Chugoku Co., Ltd. Common Stock : ¥ 30 millions Ownership : 100% Sale of civil engineering and construction steel materials and stone	Clickstream Capital L.L.C. (U.S.) Common Stock : US\$ 7,164 thousands Ownership : 100% Investment in venture capital funds	Global Stainless Supply, Inc. (U.S.) Common Stock : US\$ 200 thousands Ownership : 100% Wholesale of stainless steel tubes
A-FOSS Asia Pte. Ltd. (Singapore) Common Stock : S\$ 5,200 thousands Ownership : 100% Factory operation supporting service, in Southeast Asia, including sale of machinery and equipment	SCOA Capital LLC (U.S.) Common Stock : US\$ 14,003 thousands Ownership : 100% Investments in buyouts	Perennial Power Holdings, Inc. (U.S.) Common Stock : US\$ 57,805 thousands Ownership : 100% Investment in a power plant
Sumisho Chemicals & Plastics Nagoya Co., Ltd. Common Stock : ¥ 120 millions Ownership : 100% Wholesaling of general composite resins and chemicals	Diversified CPC International, Inc. (U.S.) Common Stock : US\$ 25,000 thousands Ownership : 96.67% Mixing, refining, and sale of aerosol gases	Summit Pharmaceuticals Europe Ltd. (U.K.) Common Stock : STG £ 500 thousands Ownership : 100% Sale of pharmaceuticals products
SC Machinex Chubu Corporation Common Stock : ¥ 350 millions Ownership : 100% Sale of machinery and equipment	Summit Agriculture Co., Inc. (U.S.) Common Stock : US\$ 720 thousands Ownership : 100% Investment in carnation seedling production and sale	Sumitrans Europe GmbH (Germany) Common Stock : EURO 1,024 thousands Ownership : 100% Forwarding, logistics business
SC Machinery & Service Co., Ltd. Common Stock : ¥ 90 millions Ownership : 100% Sales of equipments for automotive industries and FA products	Summit Pulp & Paper Inc. (U.S.) Common Stock : US\$ 5,000 thousands Ownership : 100% Processing and sale of wastepaper	Summit Chemicals Asia Pte. Ltd. (Singapore) Common Stock : S\$ 1,500 thousands Ownership : 100% Trading of fine chemicals in ASEAN and west Asian regions
C-Systems Inc. Common Stock : ¥ 30 millions Ownership : 75% Operating service of cashless parking system	Treadways Corporation (U.S.) Common Stock : US\$ 21,123 thousands Ownership : 100% Sale of tires	Others
Sumisho Infra Service Co., Ltd. Common Stock : ¥ 40 millions Ownership : 67.5% Sale of civil engineering and construction materials	600 Third Avenue Associates (U.S.) Common Stock : US\$ 66,187 thousands Ownership : 100% Office building leasing	Sumisho Administration Service Co., Ltd. Common Stock : ¥ 30 millions Ownership : 100% Personnel & general affair service
Sumisho Chemicals & Plastics Kyushu Co., Ltd. Common Stock : ¥ 120 millions Ownership : 100% Sale of chemicals and related materials in the Kyushu region	Summit Chemicals Holding Corp. (U.S.) Common Stock : US\$ 4,000 thousands Ownership : 100% Specialty chemicals trade and sales	SC Four-S Inc. Common Stock : ¥ 200 millions Ownership SC : 49% SCS : 51% Information services, including the development of business software as a system integrator
Sumisho Management Kyushu Co., Ltd. Common Stock : ¥ 30 millions Ownership : 100% Contracting of administrative work and accounting	Steel Summit Holdings, Inc. (U.S.) Common Stock : US\$ 14,501 thousands Ownership : 100% Steel service center (processing and sale of steel sheets)	Sumitomo Shoji Financial Management Co., Ltd. Common Stock : ¥ 400 millions Ownership : 100% Financial services such as cash management, trade settlement, accounting services, and risk management services to Sumitomo Corporation and its subsidiaries
SC Machinex Kyushu Corporation Common Stock : ¥ 100 millions Ownership : 100% Sale of machinery and equipment	SCOA Residential L.L.C. (U.S.) Common Stock : US\$ 27,505 thousands Ownership : 100% Investment in house/apartment developments	Sumisho Lease Co., Ltd. Common Stock : ¥ 14,760 millions Ownership : 33.91% Leasing
Hokkaido Sekisan Kogyo Co., Ltd. Common Stock : ¥ 10 millions Ownership : 100% Macadam production	Atlantic Hills Corporation (U.S.) Common Stock : US\$ 19,000 thousands Ownership : 100% Residential area development	Sumitomo Corporation Capital Europe Plc (U.K.) Common Stock : US\$ 125,000 thousands STG £ 5,765 thousands Ownership : 100% Financial services to group companies

# Global Network

## ASIA

Beijing  
Shanghai  
Tianjin  
Dalian  
Shenyang  
Qingdao  
Nanjing  
Chengdu  
Guangzhou  
Shenzhen  
Xiamen  
Hong Kong  
Taipei  
Kaohsiung  
Seoul  
Ulaanbaatar  
Bangkok  
Singapore  
Manila

Kuala Lumpur  
Jakarta  
Surabaya  
Bandung  
Medan  
Hanoi  
Ho Chi Minh City  
Danang  
Phnom Penh  
Vientiane  
Yangon  
New Delhi  
Mumbai  
Karachi  
Lahore  
Islamabad  
Colombo  
Dhaka  
Chittagong

## MIDDLE EAST

Bahrain  
Teheran  
Istanbul  
Ankara  
Abu Dhabi  
Dubai  
Amman  
Damascus  
Kuwait  
Sanaa  
Doha  
Baghdad  
Muscat  
Riyadh  
Jeddah  
Alkhobar

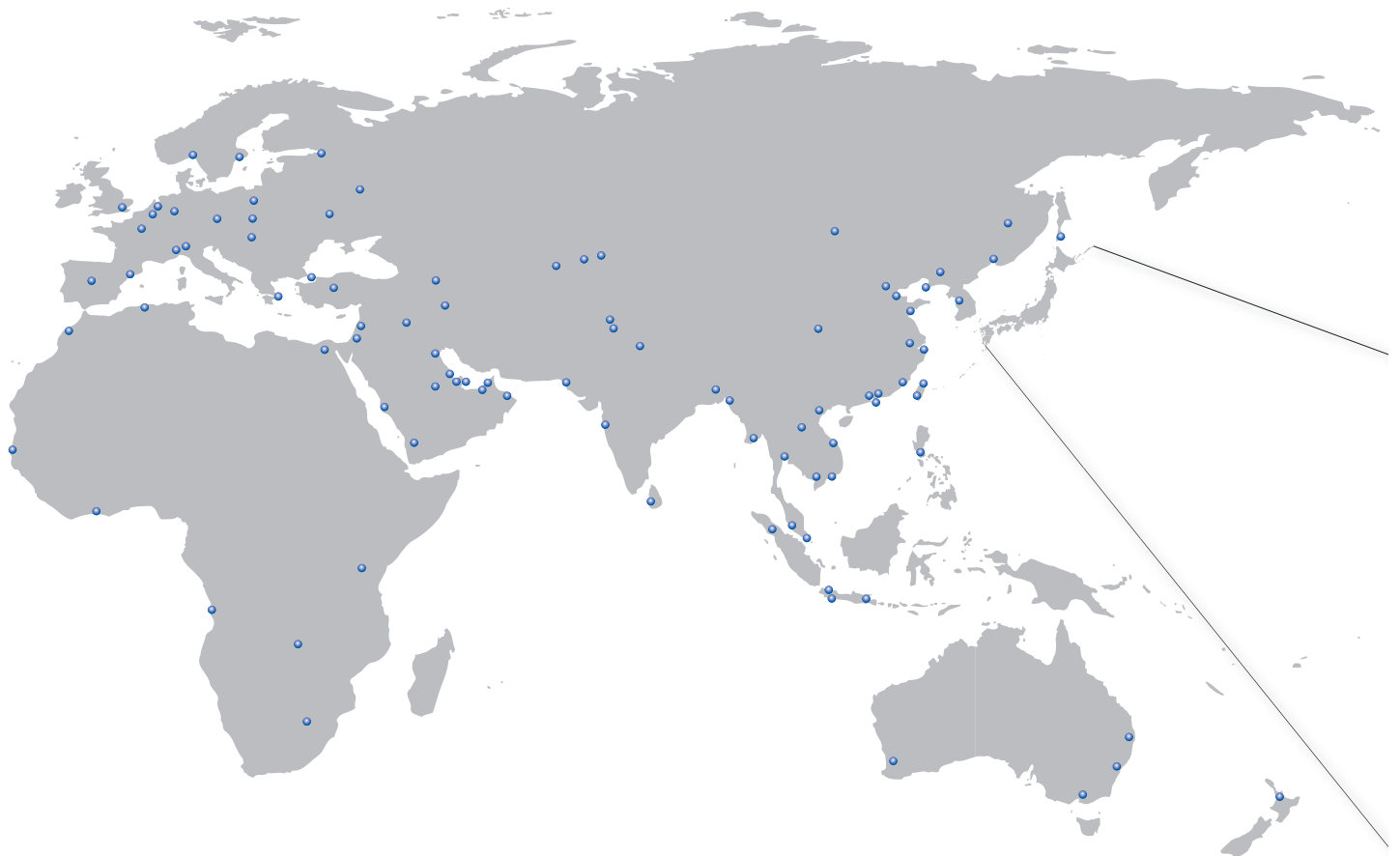
## EUROPE AND CIS

London  
Oslo  
Stockholm  
Brussels  
Rotterdam  
Düsseldorf  
Paris  
Milan  
Turin  
Madrid  
Barcelona  
Athens  
Warsaw

Krakov  
Prague  
Budapest  
Moscow  
Khabarovsk  
Vladivostok  
Yuzhno-Sakhalinsk  
St. Petersburg  
Kiev  
Almaty  
Tashkent  
Bishkek  
Baku

## AFRICA

Algiers  
Casablanca  
Cairo  
Nairobi  
Lusaka  
Luanda  
Abidjan  
Dakar  
Johannesburg





**NORTH AMERICA**

New York  
 Philadelphia  
 Detroit  
 Pittsburgh  
 Washington, D.C.  
 Atlanta  
 Chicago  
 Houston  
 Denver  
 Portland  
 Los Altos  
 Los Angeles  
 Vancouver  
 Calgary  
 Toronto  
 Montreal

**CENTRAL AMERICA AND SOUTH AMERICA**

Mexico City  
 Monterrey  
 Guatemala  
 San Salvador  
 Havana  
 Panama  
 Quito  
 Caracas  
 Bogota  
 Lima  
 Buenos Aires  
 Santiago  
 Sao Paulo  
 Rio de Janeiro  
 Porto Alegre  
 Recife

**OCEANIA**

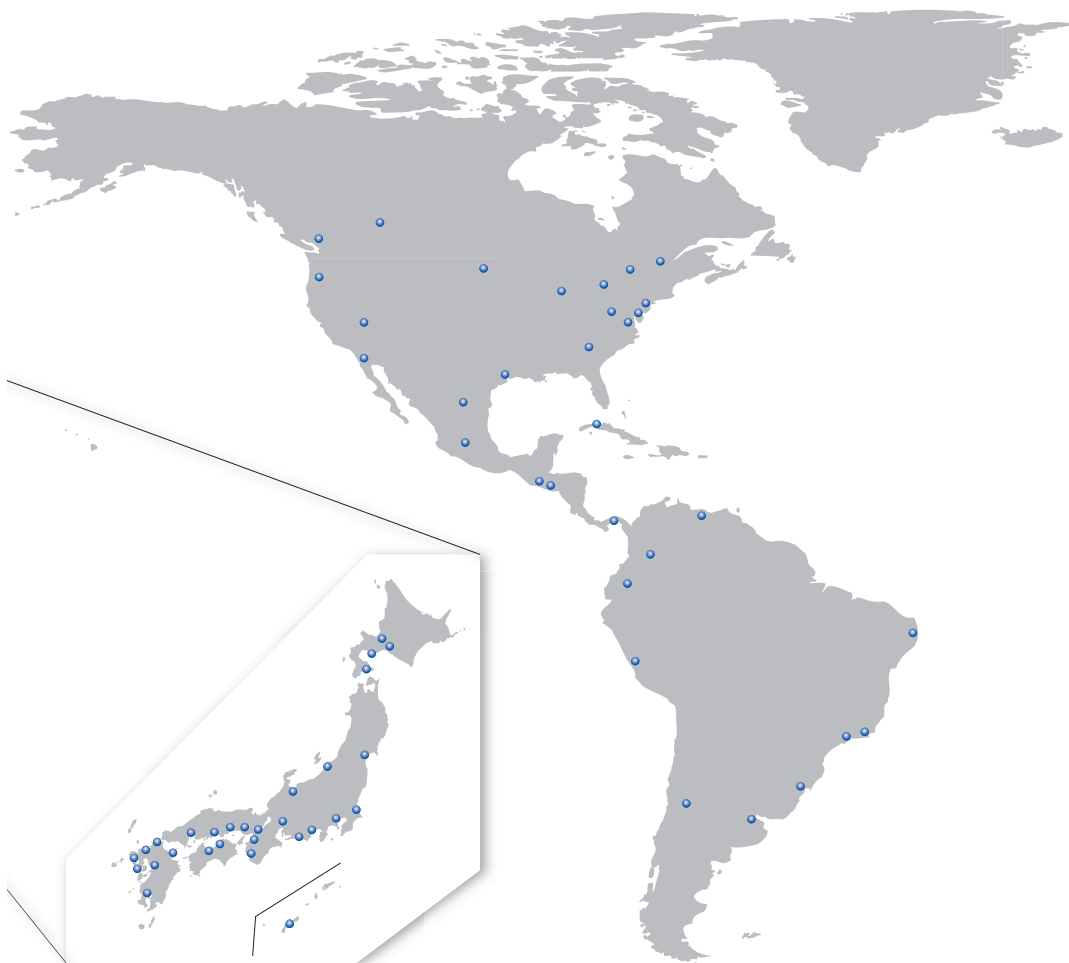
Sydney  
 Melbourne  
 Perth  
 Brisbane  
 Auckland

**JAPAN**

Tokyo  
 Sapporo  
 Tomakomai  
 Muroran  
 Hakodate  
 Sendai  
 Niigata  
 Ibaraki  
 Shizuoka  
 Hamamatsu  
 Nagoya  
 Toyama  
 Osaka  
 Kyoto  
 Wakayama

(As of July 1, 2003)

Kobe  
 Himeji  
 Okayama  
 Takamatsu  
 Niihama  
 Hiroshima  
 Kita-Kyushu  
 Fukuoka  
 Nagasaki  
 Oshima  
 Oita  
 Kumamoto  
 Kagoshima  
 Naha

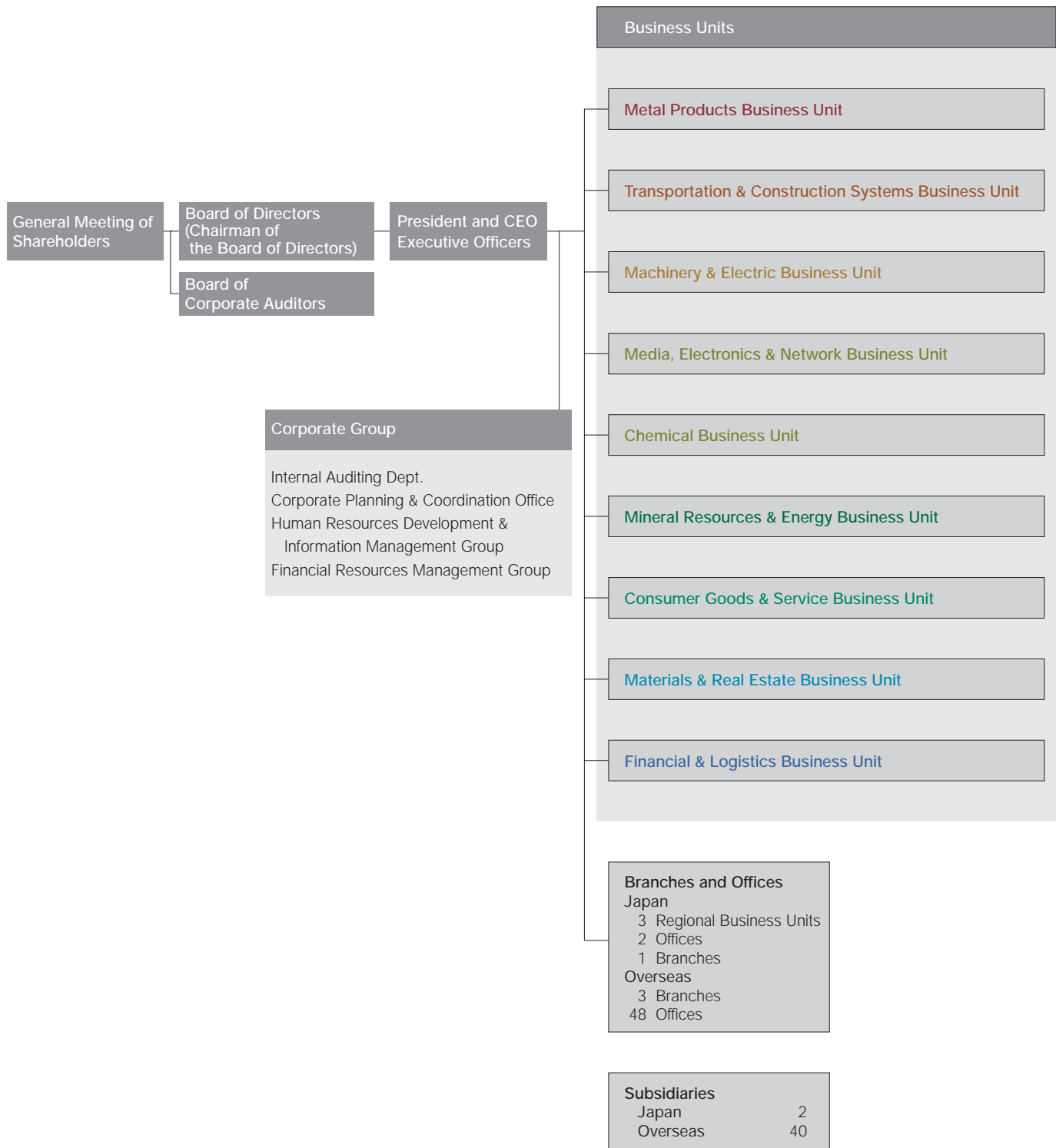


Overseas:	73 countries
Subsidiaries	40 / 81 locations
Branches	3 / 3 locations
Offices	48 / 48 locations
Total	132 locations

Japan:	
Headquarters	1 / 1 location
Subsidiaries	2 / 6 locations
Branches	3 / 21 locations
Offices	2 / 2 locations
Branch Office	1 / 1 location
Total	31 locations

# Organization

(As of July 1, 2003)



# Corporate Information

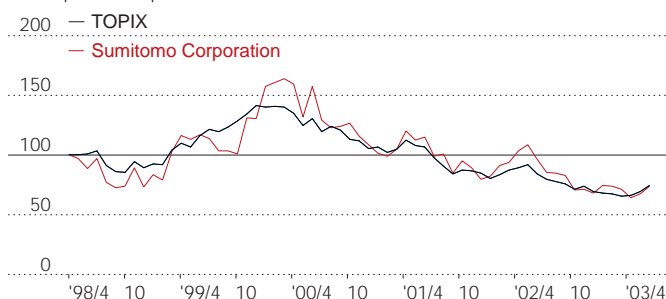
(As of March 31, 2003)

Date of Establishment:	December 24, 1919	
Paid-in Capital:	¥169,439 million	
Number of Offices* :	Overseas	132
*(As of July 1, 2003)	(73 Countries)	
	Domestic	31
	<b>Total</b>	<b>163</b>
Number of Consolidated Subsidiaries:	Overseas	354
	Domestic	180
Associated Companies: (equity method)	Overseas	104
	Domestic	83
	<b>Total</b>	<b>721</b>
Stock Listings:	Tokyo, Osaka, Nagoya, Fukuoka, Frankfurt	
Fiscal Year ends:	March 31	
Headquarters:	1-8-11, Harumi, Chuo-ku, Tokyo 104-8610	
Number of Employees:	Total including Consolidated Subsidiaries 31,589	
	Non-Consolidated 4,772	

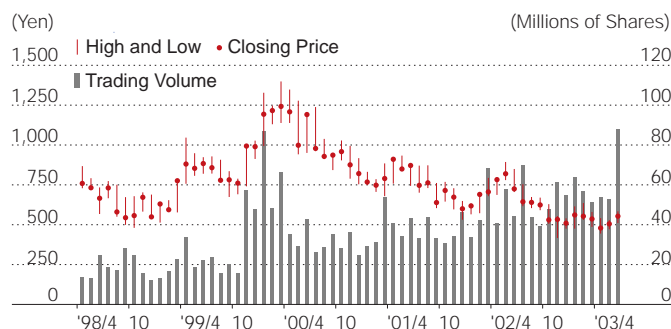
<b>American Depositary Receipts</b>	
Ratio:	1ADR:1ORD
Exchange:	OTC (Over-the-Counter)
Symbol :	SSUMY
CUSIP Number:	865613103
Depository and Registrar:	CITIBANK, N.A. Depository Receipts Services 111 Wall Street, New York NY 10005 USA
Toll Free Number:	1-877-CITI-ADR (248-4237)
Overseas Dial-In:	1-816-843-4281
e-mail:	citibank@em.fcncd.com
URL:	http://www.citibank.com/adr

## Stock Index

Share price on April 30, 1998=100



## Stock Price and Trading Volume



		'02/4	5	6	7	8	9	10	11	12	'03/1	2	3	4	5	6
Stock Price (Yen)	High	789	895	851	755	675	671	630	555	541	616	637	581	542	530	585
	Low	688	781	706	617	605	592	506	417	476	476	531	487	445	472	511
Trading Volume		40,913	57,983	44,275	69,838	43,785	39,230	47,892	61,260	54,724	63,856	57,049	51,651	53,902	52,939	88,262

Note: Above stock prices and trading volume are based on Tokyo Stock Exchange data.

## For further information contact:

Investor Relations Dept., Sumitomo Corporation  
 1-8-11, Harumi, Chuo-ku, Tokyo 104-8610, Japan  
 Telephone: 81(3)-5166-3487  
 Facsimile: 81(3)-5166-6292  
 e-mail: ir@sumitomocorp.co.jp  
 URL : <http://www.sumitomocorp.co.jp/english/>