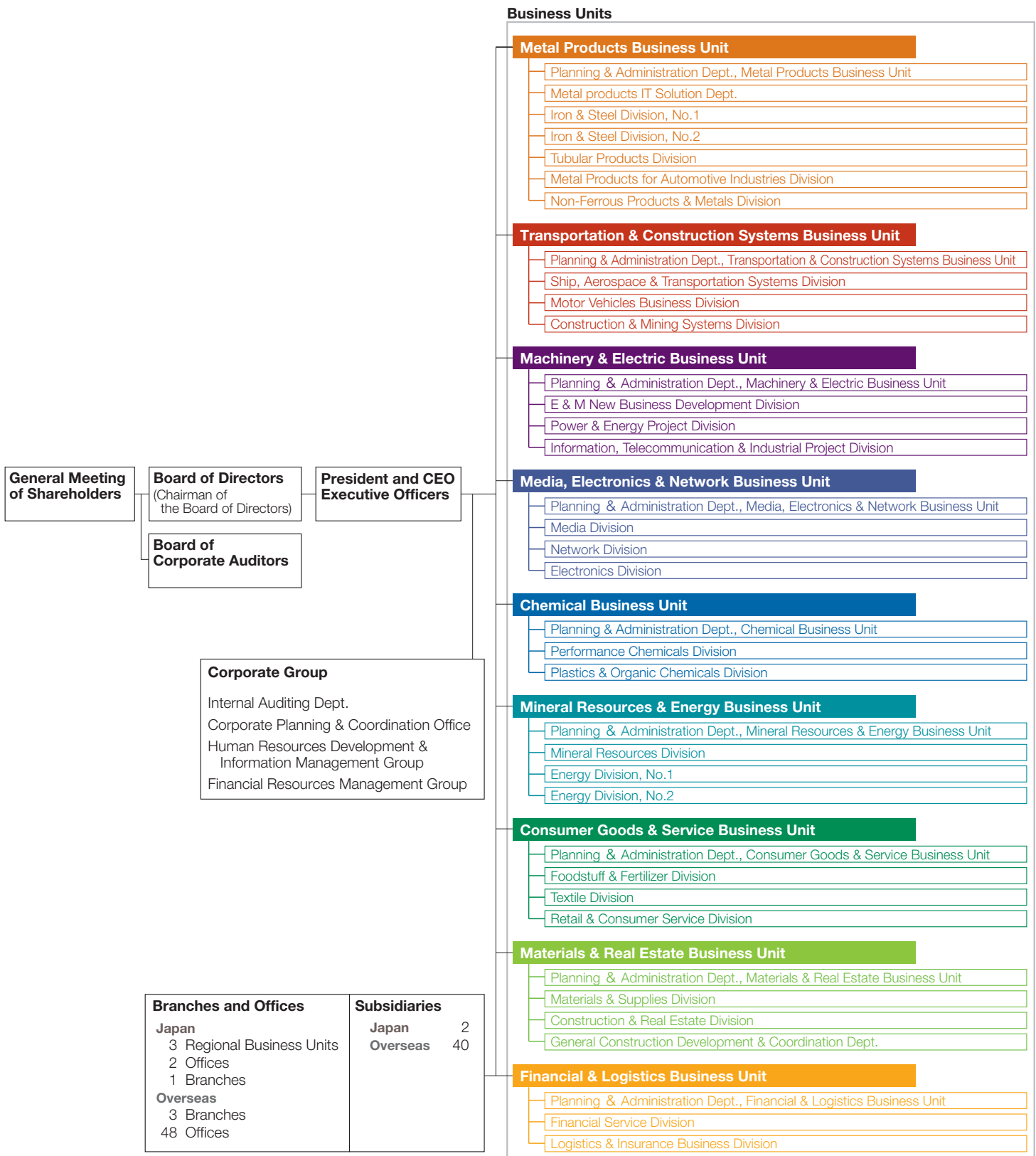




Business Operating Structure

Organization

(As of July 1, 2004)



Domestic and Overseas Subsidiaries

(As of July 1, 2004)

| Region | Name of Subsidiary | Location |
|--------------------------------------|--|--|
| Japan | Sumitomo Corporation Hokkaido Co., Ltd. Sumitomo Corporation Tohoku Co., Ltd. | Sapporo Sendai |
| Asia | Sumitomo Corporation (China) Holding Ltd. Sumitomo Corporation (Shanghai) Limited Sumitomo Corporation (Tianjin) Ltd. Sumitomo Corporation (Dalian) Ltd. Sumitomo Corporation (Qingdao) Ltd. Sumitomo Corporation (Guangzhou) Ltd. Shenzhen Sumitomo Corporation Ltd. Sumitomo Corporation (Hong Kong) Limited Sumitomo Corporation Taiwan Ltd. Sumitomo Corporation Korea Ltd. Sumitomo Corporation Thailand, Ltd. / Sumi-Thai International Limited Sumur Cahaya Sdn. Bhd. Sumitomo Corporation (Singapore) Pte. Ltd. PT. Sumitomo Indonesia Sumitomo Corporation India Private Limited | Beijing Shanghai Tianjin Dalian Qingdao Guangzhou Shenzhen Hong Kong Taipei Seoul Bangkok Kuala Lumpur Singapore Jakarta New Delhi |
| The Middle East | Sumitomo Corporation M.E., FZ-LLC Sumitomo Corporation Iran, Ltd. Sumitomo Corporation Dis Ticaret A.S. | Dubai Teheran Istanbul |
| Europe | SUMITRADE Sumitomo Corporation Europe Holding Limited Sumitomo Corporation Europe Limited Sumitomo Corporation Italia S.p.A. Sumitomo Corporation Hellas S.A. Sumitomo Corporation España S.A. Sumitomo Deutschland GmbH Sumitomo France S.A.S. Sumitomo Benelux S.A./N.V. | Moscow London London Milan Athens Madrid Duesseldorf Paris Brussels |
| North America | Sumitomo Canada Limited Sumitomo Corporation of America | Vancouver New York |
| Central America and South America | Sumitomo Corporation International S.A. Sumitomo Corporation de Mexico S.A. de C.V. Sumitomo Corporation del Ecuador S.A. Sumitomo Corporation de Venezuela, S.A. Sumitomo Corporation Colombia S.A. Sumitomo Corporation del Peru S.A. Sumitomo Corporation Argentina S.A. Sumitomo Corporation (Chile) Limitada Sumitomo Corporation do Brasil S.A. | Panama Mexico City Quito Caracas Bogota Lima Buenos Aires Santiago Sao Paulo |
| Oceania | Sumitomo Australia Limited Sumitomo Corporation (New Zealand) Limited | Sydney Auckland |

Principal Subsidiaries and Associated Companies

| Metal Products Business Unit | Main Business | Common Stock | Ownership (%) |
|--|---|--------------------------|---------------|
| SC Grainger Co., Ltd. | Electric-commerce of MRO (maintenance, repair, and operations) products | ¥ 2,953 millions | 43.54 |
| Sumisho Tekko Hanbai Co., Ltd. | Sale of steel products | ¥ 310 millions | 100.00 |
| Hokkaido Shearing Kaisha, Ltd. | Fabrication and sale of steel products | ¥ 210 millions | 96.40 |
| Summit Steel Corporation | Sale of steel sheet | ¥ 20 millions | 100.00 |
| Fibercoat Co., Ltd. | Manufacture and sale of fiber-coated steel | ¥ 150 millions | 64.63 |
| Sumisho Speciality Steel Corporation | Stock, sale, and processing of specialty steel | ¥ 210 millions | 84.00 |
| Ishihara Kohtetu Co., Ltd. | Stock, sale, and processing of tool steel | ¥ 96 millions | 81.00 |
| Stainless Kakou Center | Shearing and sale of stainless steel sheet | ¥ 45 millions | 70.00 |
| SC Tubulars Co., Ltd. | Sale of specialty tubular products | ¥ 50 millions | 100.00 |
| Sumisho Pipe and Steel Co., Ltd. | Sale of steel piping and other steel products | ¥ 499 millions | 100.00 |
| Mazda Steel Co., Ltd. | Shearing, slitting, and blanking of steel sheet | ¥ 60 millions | 51.00 |
| Sumisho Metalex Corporation | Sale of non-ferrous metal products, materials for home heat solution | ¥ 1,170 millions | 69.62 |
| Summit Aluminum Ltd. | Production of aluminum alloy ingots | ¥ 400 millions | 79.06 |
| Alcut Co., Ltd. | Shearing, slitting, and blanking of aluminum coils, sheets, and circles | ¥ 96 millions | 65.00 |
| Dong Guan S.Y. Metal Ltd. (China) | Shearing, slitting, and sale of steel plates | RMBY 50,968 thousands | 80.00 |
| Dong Guan Nitec Metal Processing Co., Ltd. (China) | Shearing, slitting, and sale of steel plates | US\$ 5,000 thousands | 100.00 |
| Zhongshan Nomura Steel Products Co., Ltd. (China) | Shearing, slitting, and sale of steel plates | US\$ 1,700 thousands | 100.00 |
| Wuxi Meifeng Metal Products Co., Ltd. (China) | Shearing, slitting, and sale of steel plates | US\$ 4,000 thousands | 81.00 |
| Shanghai Summit Metal Products Co., Ltd. (China) | Shearing, slitting, and sale of steel plates | US\$ 6,000 thousands | 80.00 |
| Tianjin Hua Zhu Metal Products Co., Ltd. (China) | Shearing, slitting, and sale of steel plates | US\$ 5,000 thousands | 53.90 |
| Shanghai Hi-Tec Metal Products Co., Ltd. (China) | Manufacture and sale of metal-processing products | US\$ 4,800 thousands | 90.00 |
| Shanghai Nikka Metal Products Co., Ltd. (China) | Stock, sale, and processing of tool steel | US\$ 3,695 thousands | 81.00 |
| Mason Metal Industry Co., Ltd. (Taiwan) | Shearing, slitting, and sale of steel plates | NT\$ 500,000 thousands | 99.99 |
| CS Metal Co., Ltd. (Thailand) | Shearing, slitting, and sale of steel plates | BAHT 360,000 thousands | 47.33 |
| Thai Steel Service Center Ltd. (Thailand) | Shearing, slitting, and sale of steel plates | BAHT 216,000 thousands | 64.60 |
| Thai Special Wire Co., Ltd. (Thailand) | Manufacture and sale of PC wire and strand | BAHT 160,000 thousands | 73.50 |
| CS Non-Ferrous Center Co., Ltd. (Thailand) | Shearing, slitting, and sale of non-ferrous metal sheets | BAHT 110,000 thousands | 42.00 |
| Asian Steel Company Ltd. (Singapore) | Investment in steel service centers and other operations in Asia | S\$ 41,176 thousands | 100.00 |
| Mactan Steel Center Inc. (Philippines) | Shearing, slitting, and sale of steel plates | P.PESO 70,000 thousands | 90.00 |
| Calamba Steel Center Inc. (Philippines) | Shearing, slitting, and sale of steel plates | P.PESO 281,000 thousands | 90.00 |
| Sumiputeh Steel Centre Sdn. Bhd. (Malaysia) | Shearing, slitting, and sale of steel plates | M\$ 12,000 thousands | 39.00 |
| P.T. Super Steel Karawang (Indonesia) | Shearing, slitting, and sale of steel plates | US\$ 4,000 thousands | 75.00 |
| P.T. Super Steel Indah (Indonesia) | Shearing, slitting, and sale of steel plates | RP 3,573,000 thousands | 40.02 |
| Petro-Summit Mechanical Co., Ltd. (Vietnam) | Manufacture of steel drum | US\$ 3,674 thousands | 51.00 |
| Hanoi Steel Center Co., Ltd. (Vietnam) | Shearing, slitting, and sale of steel plates | US\$ 3,000 thousands | 100.00 |
| Saigon Steel Service & Processing Co. (Vietnam) | Shearing, slitting, and sale of steel plates | DON 25,769,000 thousands | 50.00 |
| Myanmar Sai Steel Industry Co., Ltd. (Myanmar) | Manufacture and sale of galvanized plates | KYAT 22,800 thousands | 51.00 |
| Steel Center Europe, s.r.o. (Czech) | Shearing, slitting, and sale of steel plates | KORUNA 190,000 thousands | 50.00 |
| Arkansas Steel Associates LLC (U.S.) | Steel mini mill (Manufacture of railroad tie plates) | US\$ 26,000 thousands | 50.00 |
| SC Pipe Services Inc. (U.S.) | Investment in VAMPTS Co. | US\$ 27,411 thousands | 100.00 |
| Servilamina Summit Mexicana S.A. de C.V. (Mexico) | Steel service center (processing and sale of steel sheets) | US\$ 20,000 thousands | 100.00 |
| SC Metal Pty. Ltd. (Australia) | Investment in aluminum smelting operation in Australia | A\$ 23,208 thousands | 100.00 |
| Transportation & Construction Systems Business Unit | | | |
| Oshima Shipbuilding Co., Ltd. | Shipbuilding | ¥ 56,000 millions | 34.11 |
| Sumisho Auto Leasing Corporation | Leasing of motor vehicles | ¥ 2,751 millions | 52.90 |
| Sumisho Pocket Finance Corporation | Retail finance | ¥ 1,000 millions | 50.00 |
| R.B.I. | Automotive e-business operator | ¥ 490 millions | 100.00 |
| SC-ABeam Automotive Consulting | Automotive industry focused consulting | ¥ 50 millions | 80.00 |
| Blue-Tech Corporation | Rental of aerial work platforms | ¥ 250 millions | 100.00 |
| Sumisho Aero-Systems Corporation | Sale of aerospace equipment | ¥ 100 millions | 100.00 |
| Sumisho Machinery Trade Corporation | Trading of machinery, equipment and automobiles | ¥ 450 millions | 100.00 |
| Sumisho Marine Co., Ltd. | Daily administration of ship finance, shipowning, and marine equipment business | ¥ 30 millions | 100.00 |
| Sumisho Aircraft Asset Management B.V. (Netherlands) | Aircraft leasing | US\$ 1,700 thousands | 100.00 |
| PT. Oto Multiartha (Indonesia) | Financing of vehicles | RP 325,000,000 thousands | 96.34 |
| PT. Summit Oto Finance (Indonesia) | Financing of vehicles | RP 454,220,000 thousands | 99.69 |
| Summit Auto Management (Thailand) | Holding and management company of automotive dealership and finance companies | BAHT 240,000 thousands | 100.00 |
| Toyota Ly Thuong Kiet (Vietnam) | Sale of Toyota motor vehicles | US\$ 1,050 thousands | 100.00 |
| Summit Investment Australia Pty Limited (Australia) | Holding and management company of automotive dealership and leasing companies | A\$ 27,000 thousands | 100.00 |
| ▶ Summit Auto Lease Australia Pty Limited (Australia) | Motor vehicle leasing to corporate customers | A\$ 12,000 thousands | 100.00 *1 |

| | Main Business | Common Stock | Ownership (%) |
|---|---|---------------------------------|---------------|
| Summit Motors Investment (U.K.) Limited (U.K.) | Holding and management company of automotive dealership | STG£ 35,610 thousands | 100.00 |
| Summit Motors Hungary RT (Hungary) | Sale and import of Nissan motor vehicles | FORINT 830,000 thousands | 100.00 |
| Nissan CR spol. s r.o. (Czech) | Sale and import of Nissan motor vehicles | KORUNA 60,000 thousands | 100.00 |
| Summit Motors Ljubljana d.o.o. (Slovenia) | Sale and import of Ford motor vehicles | TOLAR 1,129,144 thousands | 100.00 |
| Summit Motors (Vladivostok) (Russia) | Sale of Toyota motor vehicles | RB 15,081 thousands | 100.00 |
| Nissan Otomotiv A.S. (Turkey) | Sale and import of Nissan motor vehicles | T.LIRA 19,186,000,000 thousands | 99.21 |
| Summit Auto Holdings South Africa Pty Limited (South Africa) | Holding and management company of automotive dealership | RAND 44,000 thousands | 100.00 |
| Summit Motors (Cameroun) S.A. (Cameroon) | Sale and import of Mitsubishi motor vehicles | CFAF 500,000 thousands | 100.00 |
| Komatsu Canada Limited (Canada) | Wholesale of construction machinery and management of dealers | CAN\$ 24,800 thousands | 100.00 |
| SMS International Corporation (U.S.) | Holding and management company of Komatsu construction machinery dealership | US\$ 22,000 thousands | 100.00 |
| Linder Industrial Machinery Company (U.S.) | Sale of Komatsu construction machinery | US\$ 25,422 thousands | 100.00 |
| Continental Equipment Company (U.S.) | Sale of Komatsu construction machinery | US\$ 8,000 thousands | 100.00 |
| Red Australia Equipment Pty Limited (Australia) | Forklift hire/rental, and sale/service for material handling equipment | A\$ 20,000 thousands | 100.00 |
| Tecnosumit (Tecnología para La Construcción y Minería S.L.) (Spain) | Holding and management company of Komatsu distributor | EURO 27,500 thousands | 100.00 |
| Sumitec International, Ltd. (Russia) | Sale and aftersales service of construction, mining machinery and material handling equipment | RB 20,055 thousands | 100.00 |
| SC Construction Machinery (Shanghai) Ltd. (China) | Sale of Komatsu construction machinery | RMBY 41,398 thousands | 100.00 |

note: *1 Summit Investment Australia's ownership

Machinery & Electric Business Unit

| | | | |
|--|---|----------------------------|--------|
| Sumisho Machinery Trade Corporation | Trading of machinery, equipment and automobiles | ¥ 450 millions | 100.00 |
| Sumitomo Shoji Machinex Co., Ltd. | Sale of machinery and equipment | ¥ 450 millions | 100.00 |
| Sumitomo Shoji Machinex Kansai Co., Ltd. | Sale of machinery and equipment | ¥ 360 millions | 100.00 |
| SC BioSciences Corporation | Sales of biotechnology instruments/technology | ¥ 480 millions | 100.00 |
| Hokkaido District Heating Co., Ltd. | District heating and cooling in Sapporo | ¥ 800 millions | 45.63 |
| Inax Corporation | Sale and maintenance of industrial washing machines | ¥ 100 millions | 97.44 |
| Inamoto Manufacturing Co., Ltd. | Manufacture and sale of industrial washing machines | ¥ 96 millions | 70.57 |
| Chugoku Systech Corporation | Sale and installation of air-conditioning equipment | ¥ 80 millions | 85.00 |
| Summit Hisense Co., Ltd. | Trading and sale of home appliance products, materials and components | ¥ 10 millions | 50.00 |
| Perennial Power Holdings Inc. | Development, ownership and management of power plant in the U.S. | US\$ 34,985 thousands | 100.00 |
| MobiCom Corporation (Mongolia) | Integrated telecommunication service in Mongolia | TUGRIK 5,522,160 thousands | 33.33 |

Media, Electronics & Network Business Unit

| | | | |
|--|---|-------------------|-----------|
| Nippon Card Co., Ltd. | Production and sale of point-card systems and equipment | ¥ 1,500 millions | 18.86 |
| VA Linux Systems Japan K.K. | Consulting service and system development with open source like Linux | ¥ 195 millions | 55.83 |
| MS Communications Co., Ltd. | Sales of telephone circuits and equipment | ¥ 1,545 millions | 50.00 |
| Asia Internet Holding Co., Ltd. | Providing international Internet-related telecommunications services | ¥ 1,624 millions | 31.61 |
| Jupiter Programming Co., Ltd. (JPC) | Management and operation of programming services | ¥ 8,434 millions | 50.00 |
| ▶ JPC's main operating channels | | | |
| ▶ Jupiter Entertainment Co., Ltd. | Supplier of movie programming and women's entertainment programming | ¥ 1,788 millions | 100.00 *2 |
| ▶ Jupiter Golf Network Co., Ltd. | Supplier of golf programming | ¥ 1,700 millions | 89.40 *2 |
| ▶ Jupiter Shop Channel Co., Ltd. | Supplier of live TV shopping programming | ¥ 4,400 millions | 70.00 *2 |
| ▶ Discovery Japan Inc. | Supplier of documentary programming | ¥ 3,890 millions | 65.40 *2 |
| ▶ Jupiter Sports, Inc. | Supplier of sports programming | ¥ 5,451 millions | 66.66 *2 |
| ▶ Animal Planet Japan K.K. | Supplier of animal entertainment programming | ¥ 41 millions | 33.33 *2 |
| Jupiter VOD Co., Ltd. | Aggregator for Video On Demand Service | ¥ 10 millions | 44.18 |
| Asmik Ace Entertainment Inc. | Production, distribution and sale of movies and videos | ¥ 947 millions | 47.67 |
| Step Visual Corporation | Production and sale of visual software | ¥ 490 millions | 91.84 |
| United Cinema Co., Ltd. | Construction and operation of multiplex cinemas | ¥ 1,600 millions | 40.00 |
| Jupiter Telecommunications Co., Ltd. (J-COM Broadband) | Cable television multiple system operation (MSO) | ¥ 63,133 millions | 31.82 |
| ▶ J-COM Broadband managed franchises | | | |
| ▶ J-COM Tokyo Co., Ltd. | Cable television operation | ¥ 10,075 millions | 80.17 *3 |
| ▶ J-COM Shonan Co., Ltd. | Cable television operation | ¥ 5,771 millions | 79.50 *3 |
| ▶ Urawa Cable Television Network Co., Ltd. | Cable television operation | ¥ 1,600 millions | 50.10 *3 |
| ▶ Media Saitama Co., Ltd. | Cable television operation | ¥ 2,993 millions | 59.03 *3 |
| ▶ Tsuchiura Cable Television Co., Ltd. | Cable television operation | ¥ 1,500 millions | 70.33 *3 |
| ▶ Kisarazu Cable Television Co., Ltd. | Cable television operation | ¥ 1,800 millions | 81.69 *3 |
| ▶ Cable Network Yachiyo Co., Ltd. | Cable television operation | ¥ 1,600 millions | 58.66 *3 |
| ▶ Super Network U Inc. | Cable television operation | ¥ 3,395 millions | 59.09 *3 |

| | Main Business | Common Stock | Ownership (%) |
|--|--|--------------------------|-----------------------------|
| ▶ Izumi CATV Co., Ltd. | Cable television operation | ¥ 676 millions | 67.31 ^{*3} |
| ▶ J-COM Gunma Co., Ltd. | Cable television operation | ¥ 1,100 millions | 100.00 ^{*3} |
| ▶ Hokusetsu Cable Net Co., Ltd. | Cable television operation | ¥ 2,000 millions | 55.00 ^{*3} |
| ▶ J-COM Kansai Co., Ltd. | Cable television operation | ¥ 15,500 millions | 84.17 ^{*3} |
| ▶ Cablenet Kobe Ashiya Co., Ltd. | Cable television operation | ¥ 2,900 millions | 52.63 ^{*3} |
| ▶ Izumiotsu CATV Inc. | Cable television operation | ¥ 240 millions | 66.67 ^{*3} |
| ▶ Cable Net Shimonoseki Co., Ltd. | Cable television operation | ¥ 1,000 millions | 50.00 ^{*3} |
| ▶ J-COM Kitakyushu Co., Ltd. | Cable television operation | ¥ 1,801 millions | 84.29 ^{*3} |
| ▶ Cablevision 21 Inc. | Cable television operation | ¥ 2,767 millions | 97.95 ^{*3} |
| ▶ Fukuoka Cable Network Co., Ltd. | Cable television operation | ¥ 2,000 millions | 45.00 ^{*3} |
| ▶ J-COM Kanto Co., Ltd. | Cable television operation | ¥ 30,004 millions | 100.00 ^{*3} |
| ▶▶ J-COM Sapporo Co., Ltd. | Cable television operation | ¥ 8,800 millions | 83.13 ^{*4} |
| Chofu Cable Inc. | Cable television operation | ¥ 2,525 millions | 30.00 |
| Kansai Multimedia Service Co., Ltd. | Cable-Internet service provider | ¥ 2,000 millions | 6.50 25.75 ^{*3} |
| @NetHome Co., Ltd. | Cable-Internet service provider | ¥ 7,800 millions | 100.00 ^{*3} |
| AJCC Corporation | Leasing of cable television converters | ¥ 400 millions | 57.50 |
| Billingsoft Japan Co., Ltd. | Development and sale of CATV billing software | ¥ 100 millions | 49.00 |
| AlphaBridge Corporation | Digital content delivery storage/services over broadband network | ¥ 337 millions | 65.70 |
| Sumisho Computer Systems Corporation | Data processing services; development and sale of computer software | ¥ 21,152 millions | 51.01 |
| Sumisho Electronics Co., Ltd. | Sale of office computers, systems, and software | ¥ 7,001 millions | 67.36 |
| G-Plan Inc. | Point e-market place | ¥ 206 millions | 73.65 |
| SC Semicon Technology Corporation | Marketing and maintenance of, and consulting for semiconductor manufacturing systems | ¥ 255 millions | 100.00 |
| Sumitronics Corporation | Sale of electronics products and parts | ¥ 400 millions | 100.00 |
| Pleomart, Inc. | Intermediate commodities e-market place provider | ¥ 1,100 millions | 27.27 |
| WAM!NET Japan K.K. | Digital graphics data transfer service | ¥ 200 millions | 63.51 |
| Sumitronics Inc. (U.S.) | Sale of electronics equipments and parts | US\$ 7,800 thousands | 64.99 |
| Sumitronics Taiwan Co., Ltd. (Taiwan) | Sale of electronics materials and parts | NT\$ 10,000 thousands | 100.00 |
| Sumitronics Asia Holding Pte. Ltd. (Singapore) | Management and operation of Sumitronics group | US\$ 9,627 thousands | 100.00 |
| Sumitronics Korea, Ltd. (Korea) | Sale of electronics products and parts | ₩ 1,000,000 thousands | 100.00 |
| Technoclean Philippines, Inc. (Philippines) | High-tech cleaning service of clean room garments | P.PESO 125,622 thousands | 100.00 |
| Sumitronics Shanghai Co., Ltd. (China) | Sale of electronics products and parts | RMB¥ 3,459 thousands | 100.00 |
| SC Venture, Inc. (U.S.) | Investments in IT ventures | US\$ 23,996 thousands | 100.00 |

note: ^{*2} JPC's ownership ^{*3} J-COM's ownership ^{*4} J-COM Kanto's ownership

Chemical Business Unit

| | | | |
|--|---|------------------------|--------|
| Sumitomo Shoji Chemicals Co., Ltd. | Sale of chemical products | ¥ 450 millions | 100.00 |
| Sumisho Air Water Co., Ltd. | Manufacturing and sales of hydrogen and other industrial gases | ¥ 480 millions | 20.00 |
| Summit Medi-Chem, Ltd. | Sale of pharmaceuticals and industrial chemicals | ¥ 138 millions | 100.00 |
| Summit Pharmaceuticals International Corporation | A comprehensive provider of innovative and biotechnology oriented pharmaceutical & diagnostic R&D related services, fund management | ¥ 480 millions | 80.00 |
| Summit Agro International, Ltd. | Sale of agricultural chemicals, fertilizers, and other materials; sale and leasing of related equipment | ¥ 320 millions | 100.00 |
| Sumitomo Shoji Plastics Co., Ltd. | Sale and trade of plastics | ¥ 900 millions | 100.00 |
| Summit Minerals (Malaysia) Sdn. Bhd. (Malaysia) | Pulverization, processing, and sale of feldspar, etc. | M\$ 6,950 thousands | 70.04 |
| Interacid Trading S.A. (Switzerland) | International trade of sulfur and sulfuric acid | US\$ 11,920 thousands | 85.00 |
| Summit Agro Europe Ltd. (U.K.) | Investment in agricultural chemicals in Europe | EURO 13,940 thousands | 100.00 |
| The Hartz Mountain Corporation (U.S.) | Pet supplies company | US\$ 140,000 thousands | 95.38 |
| Cantex Inc. (U.S.) | Manufacture and sale of polyvinyl chloride pipes | US\$ 15,000 thousands | 100.00 |
| New Port Bulk Terminal Sdn. Bhd. (Malaysia) | Storage, transportation, and sale of liquid chemicals | M\$ 2,000 thousands | 70.00 |

Mineral Resources & Energy Business Unit

| | | | |
|----------------------------------|--|-------------------|--------|
| Sumisho Reftech Co., Ltd. | Import and export of refractories, other materials and equipments for iron and steel manufacturing | ¥ 200 millions | 100.00 |
| Nusa Tenggara Mining Corporation | Investment in and financing of the Batu Hijau copper/gold mine development project in Indonesia | ¥ 14,000 millions | 74.28 |
| Sumisho Oil Corporation | Sale of petroleum products and operation of gasoline stations | ¥ 500 millions | 100.00 |

| | Main Business | Common Stock | Ownership (%) |
|--|--|-----------------------|----------------------|
| Sumisho LPG Holdings Co., Ltd. | Planning strategy of LPG business and controlling its 5 subsidiaries | ¥ 115 millions | 100.00 |
| ▶ Sumisho Daiichi LPG Co., Ltd. | Sale and distribution of LPG in Hokkaido | ¥ 250 millions | 100.00 ^{*5} |
| ▶ Sumisho LPG East Co., Ltd. | Sale and distribution of LPG in Tohoku | ¥ 50 millions | 100.00 ^{*5} |
| ▶ Sumisho LPG Central Co., Ltd. | Sale and distribution of LPG in Kanto | ¥ 270 millions | 100.00 ^{*5} |
| ▶ Sumisho LPG West Co., Ltd. | Sale and distribution of LPG in Kinki, Chugoku and Shikoku | ¥ 95 millions | 100.00 ^{*5} |
| ▶ Sumisho LPG Kyushu Co., Ltd. | Sale and distribution of LPG in Kyushu | ¥ 80 millions | 100.00 ^{*5} |
| LNG Japan Corporation | Trading of LNG, investment and financing related to LNG business | ¥ 8,002 millions | 50.00 |
| Nippon Nuclear Service Corporation | Nuclear fuel transport and related services and sale of related equipment | ¥ 40 millions | 100.00 |
| Summit Energy Holdings Corporation | Planning, development and operation of business in electric power and energy field | ¥ 495 millions | 100.00 |
| ▶ Summit Energy Corporation | Electricity retailing business | ¥ 50 millions | 70.00 ^{*6} |
| ▶ Summit Amagasaki Power Corporation | Gas-fired power generation and supply of electricity | ¥ 350 millions | 100.00 ^{*6} |
| ▶ Summit Mihama Power Corporation | Gas-fired power generation, supply of electricity and thermal energy | ¥ 300 millions | 100.00 ^{*6} |
| ▶ Summit Wind Power Sakata Corporation | Wind power generation and supply of electricity | ¥ 477 millions | 100.00 ^{*6} |
| ▶ Summit Wind Power Kashima Corporation | Wind power generation and supply of electricity | ¥ 10 millions | 100.00 ^{*6} |
| ▶ Summit Onahama S Power Corporation | Coal-fired power generation, supply of electricity and thermal energy | ¥ 495 millions | 65.00 ^{*6} |
| ▶ Summit Myojo Power Corporation | Wood chip and coal fired power generation, and supply of electricity | ¥ 400 millions | 65.00 ^{*6} |
| Sumisho Coal Australia Pty. Ltd. (Australia) | Investment in coal mines in Australia | A\$ 332,000 thousands | 100.00 |
| SC Mineral Resources Pty. Ltd. (Australia) | Investment in the Northparkes copper mine in Australia | A\$ 38,000 thousands | 100.00 |
| SC Minerals America, Inc. (U.S.) | Investment in the Morenci copper mine, the Pogo gold mine in the U.S. and the La Candelaria copper mine in Chile | US\$ 1 thousand | 100.00 |
| Petro Summit Pte. Ltd. (Singapore) | International trade of crude oil and petroleum products | US\$ 3,000 thousands | 100.00 |

note: ^{*5} Sumisho LPG Holdings' ownership ^{*6} Summit Energy Holdings' ownership

Consumer Goods & Service Business Unit

| | | | |
|---|---|------------------------|--------|
| Sumisho Nosan Kaisha, Ltd. | Sale of fertilizers and agriculture-related materials | ¥ 55 millions | 100.00 |
| Nittoh Bion Co., Ltd. | Manufacture and sale of fertilizer | ¥ 1,304 millions | 100.00 |
| Sumisho Fresh Meat Co., Ltd. | Sale of beef, pork, and processed meats, including chicken | ¥ 100 millions | 100.00 |
| Chiba Kyodo Silo Co., Ltd. | Operation of silo facility and handling of grain, such as wheat, barley and corn | ¥ 708 millions | 53.68 |
| Summit Oil Mill Co., Ltd. | Manufacture and sale of vegetable oil and oil meal | ¥ 97 millions | 51.00 |
| SC Foods Co., Ltd. | Import, development, and sale of foodstuffs | ¥ 495 millions | 100.00 |
| Shinko Sugar Co., Ltd. | Sugar refining | ¥ 1,495 millions | 66.60 |
| Sumifru Corporation | Import and sale of fruits and vegetables | ¥ 200 millions | 51.00 |
| Allied Co., Ltd. | Import and sale of flowers | ¥ 60 millions | 100.00 |
| ST Agri-Products Corp. | Import and sale of Chinese fresh and processed vegetables | ¥ 360 millions | 72.78 |
| Sumitex Co., Ltd. | Import, export and sale of textile products | ¥ 800 millions | 100.00 |
| Sumisho Interior International Inc. | Space & interior designing and installation, import, export and sale of consumer goods, such as furniture and carpet for residential and contract use | ¥ 100 millions | 100.00 |
| Ansell Sumisho Ltd. | Import and sale of industrial-use gloves and related products | ¥ 100 millions | 43.00 |
| Summit, Inc. | Supermarket chain | ¥ 3,920 millions | 100.00 |
| Summit Colmo, Inc. | General merchandise store chain | ¥ 100 millions | 100.00 |
| Mammy Mart Corporation | Supermarket chain | ¥ 2,660 millions | 20.04 |
| Sumisho Drugstores Inc. | Drugstore chain | ¥ 160 millions | 100.00 |
| Otto-Sumisho Inc. | Mail-order business with OTTO GmbH & Co. KG, Germany | ¥ 7,150 millions | 49.00 |
| Eddie Bauer Japan Inc. | Sale of casual wears & goods through mail-order & retailstore chain | ¥ 3,000 millions | 34.30 |
| Club Createurs Beaute Japon, Inc. | Mail-order business of brand cosmetics offered by the top French creators such as agnès b. and Michel Klein | ¥ 1,150 millions | 29.40 |
| Sumisho Hermes General Service Inc. | Fulfillment service provider for mail-order business | ¥ 400 millions | 51.00 |
| Coach Japan, Inc. | Sale of Coach brand handbags and accessories | ¥ 50 millions | 50.00 |
| Oriental Diamond, Inc. | Wholesale and retail sales of polished diamonds and jewelry products | ¥ 270 millions | 100.00 |
| Taisei Coins Corporation | Sale of the numismatic coins & commemorative coins covering all over the world | ¥ 200 millions | 80.00 |
| Sumifert Sdn. Bhd. (Malaysia) | Import and sale of fertilizers | M\$ 500 thousands | 50.00 |
| Summit-Quinphos (NZ) Ltd. (New Zealand) | Import and sale of fertilizers in New Zealand | NZ\$ 1,818 thousands | 60.00 |
| Sumi-Thai Fertilizer Co., Ltd. (Thailand) | Import of fertilizer materials and sale of chemical fertilizers in Thailand | BAHT 10,000 thousands | 100.00 |
| Summit Specialty Oil Co., Inc. (U.S.) | Contracting of vegetable oil crushing and refining in the U.S. | US\$ 3,716 thousands | 100.00 |
| Thai SPF Products Co., Ltd. (Thailand) | Farming of SPF (Specific Pathogen Free) pork in Thailand | BAHT 250,000 thousands | 26.94 |
| Pressa Holdings, Inc. (U.S.) | Investment in hay compressing operation in the U.S. | US\$ 2,328 thousands | 100.00 |
| SC Agri Produce Pty Ltd (Australia) | Investment in hay compressing operation in Australia | A\$ 2,436 thousands | 100.00 |
| Sumitex Hong Kong Limited (Hong Kong) | Sale of textile products and materials | HK\$ 10,000 thousands | 100.00 |
| Dalian Huayou Knitting Co., Ltd. (China) | Manufacture and sale of tussah silk sweaters | RMB¥ 11,000 thousands | 100.00 |

| Materials & Real Estate Business Unit | Main Business | Common Stock | Ownership (%) |
|--|--|-------------------------|---------------|
| S.C. Cement Co., Ltd. | Sale of cement, ready-mixed concrete and concrete products | ¥ 200 millions | 100.00 |
| Sumisho & Mitsubishi Kenzai Co., Ltd. | Sale of building materials | ¥ 2,500 millions | 50.00 |
| IG Kogyo Co., Ltd. | Manufacture and sale of insulated metal panels for roofing and walls | ¥ 254 millions | 48.70 |
| Sumisho Paper Co., Ltd. | Sale of pulp, wastepaper, paper, paperboard and packaging materials | ¥ 400 millions | 100.00 |
| SEVEN INDUSTRIES CO., LTD. | Manufacture and sale of laminated lumber and wood products | ¥ 2,473 millions | 50.70 |
| Horiden Co., Ltd. | Sales of ready-mixed concrete, concrete products, cement and aggregate. | ¥ 61 millions | 100.00 |
| Shaheen Tyres Company L.L.C. (UAE) | Import and sales of tires in the UAE | DIRHAM 12,500 thousands | 49.00 |
| SC Tire International Co., Ltd. | Import, export and sales of tires and tubes | ¥ 50 millions | 100.00 |
| Sumisho Building Management Co., Ltd. | Management and operation of office buildings and shopping centers | ¥ 100 millions | 100.00 |
| SC Properties Co., Ltd. | Ownership and leasing of office buildings and other real estate | ¥ 15,000 millions | 100.00 |
| Yokohama City Management Co., Ltd. | Management, operation, and leasing of multipurpose facilities in Minato Mirai 21 | ¥ 100 millions | 25.50 |
| Harumi Corporation | Management of Harumi Island Triton Square | ¥ 38 millions | 19.44 |
| Sumisho Urban Kaihatsu Co., Ltd. | Planning, development, management, and operation of shopping centers; microbrewery | ¥ 100 millions | 100.00 |
| Osaka Hokko Development Co., Ltd. | Ownership and leasing of retail facilities and office buildings | ¥ 40 millions | 100.00 |
| Sumisho Tatemono Co., Ltd. | Sale and management of residential properties; house remodeling | ¥ 400 millions | 100.00 |
| SC Building Management Corporation | Management and operation of office buildings in Kansai region | ¥ 40 millions | 60.00 |
| Reibi Corporation | Management of buildings in Kansai region | ¥ 30 millions | 63.47 |
| Sumisho Estem Corporation | Sale and management of residential properties in Kansai region | ¥ 350 millions | 100.00 |
| Yasato Kosan Kaisha, Ltd. | Owning and operating of golf course; Summit Golf Club (Ibaraki Pref.) | ¥ 90 millions | 100.00 |
| Sumisho Development Co., Ltd. (Thailand) | Leasing of apartment and office buildings | BAHT 15,000 thousands | 98.83 |
| P.T. Summitas Property (Indonesia) | Leasing of office buildings | US\$ 12,500 thousands | 40.00 |

Financial & Logistics Business Unit

| | | | |
|--|---|---------------------------|--------|
| Sumisho Financial Service Co., Ltd. | Financial services | ¥ 100 millions | 100.00 |
| Sumisho Card Inc. | Credit card business | ¥ 490 millions | 100.00 |
| SC Bio Capital Co., Ltd. | Investment funds | ¥ 60 millions | 100.00 |
| Sumisho Materials Corporation | Trading of precious metals and other products | ¥ 200 millions | 100.00 |
| All Trans Co., Ltd. | Warehousing and distribution services | ¥ 200 millions | 100.00 |
| Sumitrans (Japan) Corporation | Global logistics provider | ¥ 400 millions | 100.00 |
| Sumisho Logistics Co., Ltd. | Logistics service provider | ¥ 150 millions | 100.00 |
| Bluewell Corporation | Agent for casualty insurance and life insurance | ¥ 125 millions | 100.00 |
| Bluewell Insurance Brokers Ltd. | Broker for casualty insurance and re-insurance | ¥ 10 millions | 100.00 |
| Summit Air Service Corporation | Travel agency | ¥ 100 millions | 100.00 |
| Sumisho Capital Management Co. (Cayman) | Investment advisory | ¥ 100 millions | 100.00 |
| Sumitomo Corporation Equity Asia Limited (Hong Kong) | Private equity investment in Asia | US\$ 13,000 thousands | 100.00 |
| Nava Nakorn Distribution Centre Co., Ltd. (Thailand) | Financial services | BAHT 180,000 thousands | 57.32 |
| P.T. Indo Summit Logistics (Indonesia) | Credit card business | US\$ 5,480 thousands | 90.44 |
| Dragon Logistics Co., Ltd. (Vietnam) | Investment funds | DON 41,602,000 thousands | 27.00 |
| Summit Logitech Korea, Limited (Korea) | Trading of precious metals and other products | W 1,500,000 thousands | 75.00 |
| Shanghai Huayou International Forwarding Co., Ltd. (China) | Warehousing and distribution services | US\$ 2,000 thousands | 25.00 |
| Shanghai Sumisho-ADP Internationa Forwarding Co., Ltd. (China) | Warehousing and distribution services | US\$ 1,100 thousands | 70.00 |
| Fuzhu Logistics (Shenzhen) Co., Ltd. (China) | Warehousing and distribution services | HK\$ 5,000 thousands | 100.00 |
| Tianjin Sumisho Logistics Co., Ltd. (China) | Warehousing and distribution services | US\$ 1,000 thousands | 100.00 |
| Wuxi Sumisho Hi-tech Logistics Co., Ltd. (China) | Warehousing and distribution services | US\$ 5,000 thousands | 50.00 |
| Shanghai Dazhong Sagawa Logistics Co., Ltd. (China) | Door-to-door delivery services | US\$ 4,220 thousands | 24.50 |
| Beijing Sumisho Sagawa Logistics Co., Ltd. (China) | Door-to-door delivery services | US\$ 3,620 thousands | 35.00 |
| Bluewell Insurance (Singapore) Pte. Ltd. (Singapore) | Captive insurance company | S\$ 1,200 thousands | 91.00 |
| Thang Long Industrial Park Corporation (Vietnam) | Development, sales, and operation of industrial estate in Vietnam | DON 327,620,000 thousands | 58.00 |
| P.T. East Jakarta Industrial Park (Indonesia) | Sales, operation, and maintenance of industrial estate in Indonesia | US\$ 8,550 thousands | 60.00 |

Domestic

| | | | |
|--------------------------------------|--|----------------|--------|
| Fukusaki Coil Center Co., Ltd. | Processing and sale of steel sheets | ¥ 300 millions | 90.00 |
| Sumisho Steel Sheets Works Co., Ltd. | Fabrication and sale of steel products | ¥ 462 millions | 89.18 |
| Kansai Stainless Corp. | Processing of stainless steel sheets | ¥ 100 millions | 60.00 |
| Sumisho Iron & Steel Co., Ltd. | Sale of specialty steel products | ¥ 100 millions | 90.00 |
| Ishida Kinzoku Co.,Ltd. | Sale of Stainless Steel sheets | ¥ 63 millions | 82.76 |
| SC Pipe Solutions Co.,Ltd. | Sale of steel tubular products | ¥ 334 millions | 99.88 |
| Nippon Katan Co., Ltd. | Manufacture and sale of hardware for transmitters and automotive parts | ¥ 886 millions | 39.00 |
| Sumisho Textile Company, Ltd. | Processing and sale of textile goods | ¥ 830 millions | 100.00 |
| Tortoise Co., Ltd. | Processing and sale of interior goods and home furnishing to consumers' cooperatives | ¥ 50 millions | 100.00 |
| Sumisho Montblanc Co., Ltd. | Processing and sale of work uniforms and related clothing products | ¥ 80 millions | 87.50 |

| | Main Business | Common Stock | Ownership (%) |
|---|--|-----------------------|---------------|
| Tamashima Sports Plaza Co., Ltd. | Sports club | ¥ 150 millions | 85.00 |
| Summit Wool Spinners Limited (New Zealand) | Manufacture and sale of wool yarn for carpets | NZ\$ 14,275 thousands | 100.00 |
| Sumisho Material Chugoku Co., Ltd. | Sale of civil engineering and construction steel materials, and stone | ¥ 30 millions | 100.00 |
| A-FOSS Asia Pte. Ltd. (Singapore) | Factory operation supporting service, in Southeast Asia, including sale of machinery and equipment | S\$ 6,600 thousands | 100.00 |
| Sumisho Chemicals & Plastics Nagoya Co., Ltd. | Wholesaling of general composite resins and chemicals | ¥ 120 millions | 100.00 |
| Sumitomo Shoji Machinex Chubu Co., Ltd. | Sale of machinery and equipment | ¥ 350 millions | 100.00 |
| SC Machinery & Service Co., Ltd. | Sales of equipments for automotive industries and FA products | ¥ 90 millions | 100.00 |
| C-Systems Inc. | Operating service of cashless parking system | ¥ 30 millions | 75.00 |
| Sumisho I.S. Co., Ltd. | Sale of civil engineering and construction materials | ¥ 40 millions | 67.50 |
| Sumisho Chemicals & Plastics Kyushu Co., Ltd. | Sale of chemicals and related materials in the Kyushu region | ¥ 120 millions | 100.00 |
| Sumisho Management Kyushu Co., Ltd. | Contracting of administrative work and accounting | ¥ 30 millions | 100.00 |
| Sumisho Machinex Kyushu Co., Ltd. | Sale of machinery and equipment | ¥ 100 millions | 100.00 |
| Hokkaido Sekisan Kogyo Co., Ltd. | Macadam production | ¥ 10 millions | 100.00 |

Overseas

| | | | |
|--|---|--------------------------|--------|
| AB Tube Processing, Inc. (U.S.) | Tube processing for airbag inflators | US\$ 2,600 thousands | 100.00 |
| Global Stainless Supply, Inc. (U.S.) | Wholesale of stainless steel tubes | US\$ 200 thousands | 100.00 |
| Premier Pipe, L.P. (U.S.) | Investment in Total Premier Service and pipe stocking | US\$ 3,501 thousands | 100.00 |
| Summit Tubulars Corporation (Canada) | Sale of tubular products for oil and gas industry | C\$ 282 thousands | 100.00 |
| V & M Star LP (U.S.) | Seamless tubular products mill | US\$ 380,000 thousands | 19.47 |
| Distributor Metals Corporation (U.S.) | Sale of stainless steel materials | US\$ 372 thousands | 100.00 |
| SET Enterprises Inc (U.S.) | Slitting and blanking of steel sheet for automotive industry | US\$ 21,955 thousands | 45.00 |
| SteelSummit Holdings, Inc. (U.S.) | Steel service center (processing and sale of steel sheets) | US\$ 14,501 thousands | 100.00 |
| SteelSummit International Inc. (U.S.) | Sale of steel products | US\$ 8,000 thousands | 100.00 |
| Perennial Power Holdings, Inc. (U.S.) | Development, ownership and management of power plant in the U.S. | US\$ 34,985 thousands | 100.00 |
| Summit Motor Management, Inc. (U.S.) | Holding and management company of automotive dealerships | US\$ 20,963 thousands | 100.00 |
| Clickstream Capital L.L.C. (U.S.) | Investment in IT venture capital funds | US\$ 7,164 thousands | 100.00 |
| Presidio Venture Partners, L.L.C. (U.S.) | Investment in IT ventures | US\$ 73,043 thousands | 100.00 |
| Cantex Inc. (U.S.) | Manufacture and sale of polyvinyl chloride pipes | US\$ 15,000 thousands | 100.00 |
| Diversified CPC International, Inc. (U.S.) | Mixing, refining, and sale of aerosol gases | US\$ 25,000 thousands | 96.00 |
| Summit Chemicals Holding Corp. (U.S.) | Holding company of trading chemical products | US\$ 4,000 thousands | 100.00 |
| The Hartz Mountain Corporation (U.S.) | Pet supplies company | US\$ 140,000 thousands | 95.38 |
| Pressa Agri GP (U.S.) | Sale of hay | US\$ 5,000 thousands | 100.00 |
| Summit Agriculture Co., Inc. (U.S.) | Investment in carnation seedling production and sale | US\$ 720 thousands | 100.00 |
| 600 Third Avenue Associates (U.S.) | Office building leasing | US\$ 52,786 thousands | 100.00 |
| Atlantic Hills Corporation (U.S.) | Residential area development | US\$ 19,000 thousands | 100.00 |
| SCOA Residential L.L.C. (U.S.) | Investment in house/apartment developments | US\$ 30,620 thousands | 100.00 |
| Summit Pulp & Paper Inc. (U.S.) | Processing and sale of wastepaper | US\$ 5,000 thousands | 100.00 |
| Treadways Corporation (U.S.) | Sale of tires | US\$ 21,123 thousands | 100.00 |
| Sumitrans Corporation (U.S.) | International intermodal transport | US\$ 3,082 thousands | 100.00 |
| Broadway Premium Funding (U.S.) | Insurance premium financing | US\$ 1,500 thousands | 100.00 |
| GeoFocus, LLC (U.S.) | Development and sale of train tracking system | US\$ 3,800 thousands | 100.00 |
| SCOA Capital LLC (U.S.) | Investment in buyout funds | US\$ 14,003 thousands | 100.00 |
| Oxford Finance Corporation (U.S.) | Equipment loan service in bio science industry | US\$ 51,000 thousands | 97.00 |
| SCOA Finance Company (U.S.) | Financial services | US\$ 3,000 thousands | 100.00 |
| Summit D&V Kft. (Hungary) | OEM supply, sub-assembly and sequence delivery of automotive components | FORINT 125,000 thousands | 90.00 |
| Summit Pharmaceuticals Europe Ltd. (U.K.) | Sale of pharmaceuticals products | STG £ 500 thousands | 100.00 |
| Sumitrans Europe GmbH (Germany) | Forwarding, logistics business | EURO 1,024 thousands | 100.00 |

Others

| | | | |
|--|--|---|------------------------------|
| Sumisho Administration Services Co., Ltd. | Personnel & general affair service | ¥ 30 millions | 100.00 |
| SC InfoTech Corporation | Information services, including the development of business software as a system integrator | ¥ 200 millions | 49.00 51.00 ^{*7} |
| Sumitomo Shoji Financial Management Co., Ltd. | Financial services such as cash management, trade settlement, accounting services, and risk management services to Sumitomo Corporation and its subsidiaries | ¥ 400 millions | 100.00 |
| Sumisho Lease Co., Ltd. | Leasing | ¥ 14,760 millions | 36.21 |
| Sumitomo Corporation Capital Europe Plc (U.K.) | Financial services to group companies | US\$ 125,000 thousands STG £ 5,765 thousands | 100.00 |

note: ^{*7} Sumisho Computer Systems' ownership

Global Network

(As of August 1, 2004)



ASIA

Beijing
Shanghai
Changchun
Dalian
Shenyang
Tianjin
Qingdao
Nanjing
Chengdu
Guangzhou
Xiamen
Shenzhen
Hong Kong
Taipei
Kaohsiung
Seoul
Ulaanbaatar
Bangkok
Singapore
Manila

Kuala Lumpur
Jakarta
Surabaya
Bandung
Medan
Hanoi
Ho Chi Minh City
Danang
Phnom Penh
Vientiane
Yangon
New Delhi
Mumbai
Karachi
Lahore
Islamabad
Colombo
Dhaka
Chittagong

MIDDLE EAST

Dubai
Teheran
Istanbul
Ankara
Bahrain
Abu Dhabi
Amman
Damascus
Kuwait
Sanaa
Doha
Baghdad
Muscat
Karachi
Riyadh
Jeddah
Alkhubar

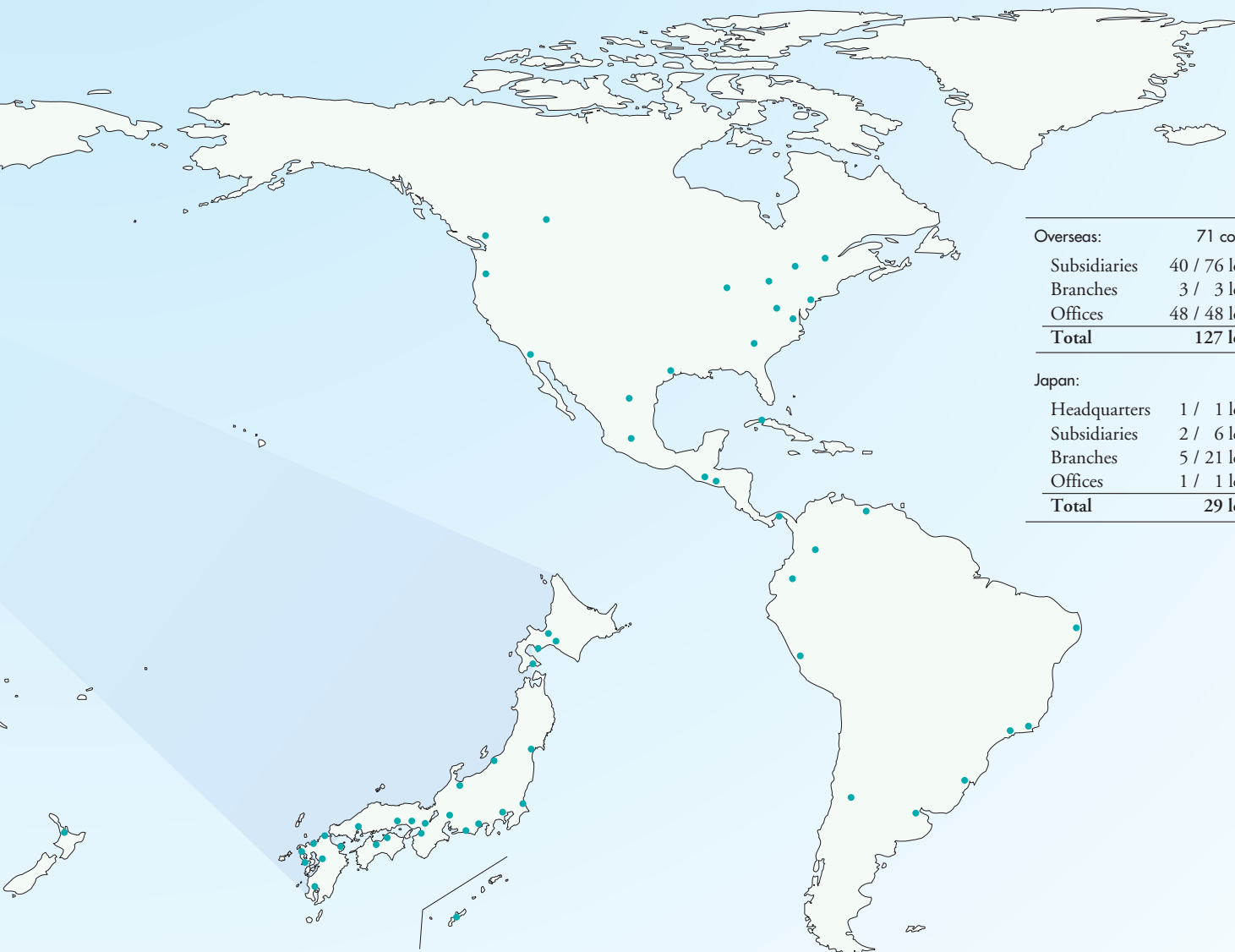
EUROPE AND CIS

London
Oslo
Stockholm
Brussels
Rotterdam
Duesseldorf
Paris
Milan
Turin
Madrid
Barcelona
Athens

Krakov
Prague
Moscow
Khabarovsk
Vladivostok
Yuzhno-Sakhalinsk
St. Petersburg
Kiev
Almaty
Tashkent
Bishkek
Baku

AFRICA

Algiers
Casablanca
Cairo
Nairobi
Luanda
Abidjan
Dakar
Johannesburg



| | |
|--------------|----------------------|
| Overseas: | 71 countries |
| Subsidiaries | 40 / 76 locations |
| Branches | 3 / 3 locations |
| Offices | 48 / 48 locations |
| Total | 127 locations |

| | |
|--------------|---------------------|
| Japan: | |
| Headquarters | 1 / 1 location |
| Subsidiaries | 2 / 6 locations |
| Branches | 5 / 21 locations |
| Offices | 1 / 1 locations |
| Total | 29 locations |

NORTH AMERICA

- New York
- Detroit
- Pittsburgh
- Washington, D.C.
- Atlanta
- Chicago
- Houston
- Portland
- Los Angeles
- Vancouver
- Calgary
- Toronto
- Montreal

CENTRAL AMERICA
AND
SOUTH AMERICA

- Mexico City
- Monterrey
- Guatemala
- San Salvador
- Havana
- Panama
- Quito
- Caracas
- Bogota
- Lima
- Buenos Aires
- Santiago
- Sao Paulo
- Rio de Janeiro
- Porto Alegre
- Recife

OCEANIA

- Sydney
- Melbourne
- Perth
- Auckland

JAPAN

- Tokyo
- Sapporo
- Tomakomai
- Muroran
- Hakodate
- Sendai
- Niigata
- Ibaraki
- Toyama
- Shizuoka
- Hamamatsu
- Nagoya
- Kyoto
- Osaka
- Kobe
- Himeji
- Hiroshima
- Takamatsu
- Niihama
- Kita-Kyushu
- Fukuoka
- Oita
- Nagasaki
- Oshima
- Kumamoto
- Kagoshima
- Naha

