

Corporate Information

(As of March 31, 2004)

Date of Establishment:	December 24, 1919	Fiscal Year End:	March 31
Consolidated Shareholders' Equity:	¥730.8 billion	Headquarters:	1-8-11, Harumi, Chuo-ku, Tokyo 104-8610, Japan
Number of Consolidated Subsidiaries:	Overseas 383 Domestic 192	Number of Employees:	Total including Consolidated Subsidiaries 33,799 Non-Consolidated 4,683
Associated Companies: (equity method)	Overseas 130 Domestic 87 <hr/> Total 792		

Stock Information

(As of July 1, 2004)

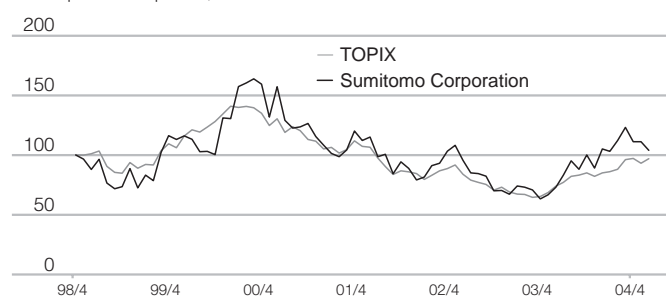
Stock Listings: Tokyo, Osaka, Nagoya, Fukuoka

American Depository Receipts

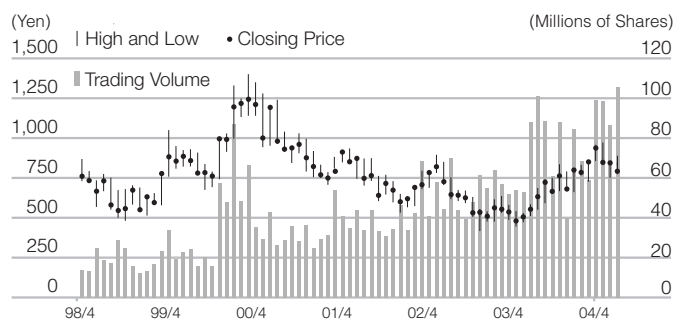
Ratio:	1ADR:1ORD	Depository and Registrar:	CITIBANK, N.A. Depository Receipts Services 388 Greenwich Street, 14th Floor, New York, NY 10013 USA
Exchange:	OTC (Over-the-Counter)	Toll Free Number:	1-877-CITI-ADR (248-4237)
Symbol :	SSUMY	Overseas Dial-In:	1-816-843-4281
CUSIP Number:	865613103	e-mail:	citibank@em.fcncd.com
		URL:	http://www.citibank.com/adr

Stock Index

Share price on April 30, 1998=100



Stock Price and Trading Volume



		'03/4	5	6	7	8	9	10	11	12	'04/1	2	3	4	5	6
Stock Price (Yen)	High	542	530	585	687	743	751	836	791	799	832	855	958	972	853	889
	Low	445	472	511	551	591	663	667	668	661	766	726	856	842	750	774
Trading Volume		53,902	52,939	88,262	101,120	88,695	61,106	88,235	39,748	84,512	68,456	58,663	98,956	98,600	86,364	105,801

Note: Above stock prices and trading volume are based on Tokyo Stock Exchange data.