

Corporate Information (As of March 31, 2005)

Date of Establishment: December 24, 1919

Fiscal Year End: March 31

Consolidated Shareholders' Equity: ¥934.9 billion

Headquarters: 1-8-11, Harumi, Chuo-ku,
Tokyo 104-8610, Japan

Number of Consolidated Subsidiaries: Overseas 410
Domestic 196

Number of Employees: Total including Consolidated
Subsidiaries 39,797
Non-Consolidated 4,643

Associated Companies: Overseas 150
(equity method) Domestic 80
Total 836

Stock Information (As of July 1, 2005)

Stock Listings: Tokyo, Osaka, Nagoya, Fukuoka

American Depositary Receipts

Ratio: 1ADR:1ORD

Depository and Registrar: CITIBANK, N.A.
Shareholder Services
P.O. Box 43077
Providence, Rhode Island
02940-3077, USA

Exchange: OTC (Over-the-Counter)

Symbol: SSUMY

CUSIP Number: 865613103

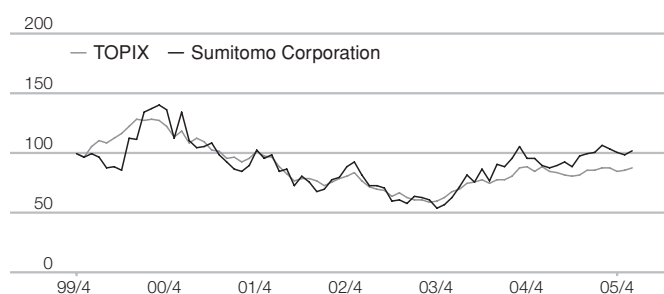
Toll Free Number: 1-877-248-4237(CITI-ADR)
Overseas Dial-In: 1-816-843-4281

e-mail: citibank@shareholders-online.com

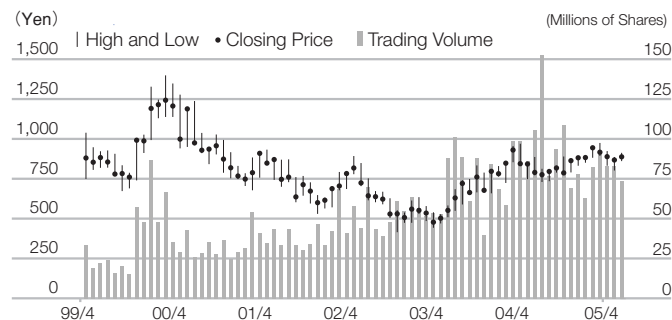
URL: <http://www.citigroup.com/adr>

Stock Index

Share price on April 30, 1999=100



Stock Price and Trading Volume



		'04/4	5	6	7	8	9	10	11	12	'05/1	2	3	4	5	6
Stock Price (Yen)	High	972	853	889	815	805	834	892	868	888	897	953	977	926	889	915
	Low	842	750	774	732	737	791	776	792	834	853	884	895	834	804	863
Trading Volume		98,600	86,364	105,801	152,470	76,917	93,701	108,687	69,553	78,285	63,104	82,344	92,679	83,022	83,346	73,615

Note: Above stock prices and trading volume are based on Tokyo Stock Exchange data.

For further information contact:

Sumitomo Corporation
Investor Relations Department

1-8-11, Harumi, Chuo-ku, Tokyo 104-8610, Japan

Telephone: 81(3)-5166-3522

Facsimile: 81(3)-5166-6292

e-mail: ir@sumitomocorp.co.jp

URL : <http://www.sumitomocorp.co.jp/english/>