

# CORPORATE INFORMATION (AS OF MARCH 31, 2006)

Date of Establishment:	<b>December 24, 1919</b>	Fiscal Year End:	<b>March 31</b>
Consolidated Shareholders' Equity:	<b>¥1,304.0 billion</b>	Headquarters:	<b>1-8-11, Harumi, Chuo-ku, Tokyo 104-8610, Japan</b>
Number of Consolidated Subsidiaries:	<b>Overseas 441 Domestic 185</b>	Number of Employees:	<b>Total including Consolidated Subsidiaries 51,700 Non-Consolidated 4,637</b>
Associated Companies: (equity method)	<b>Overseas 173 Domestic 76 Total 875</b>		

# STOCK INFORMATION (AS OF JULY 1, 2006)

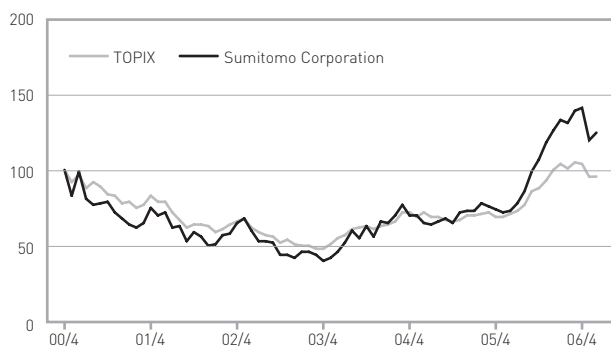
Stock Listings: **Tokyo, Osaka, Nagoya, Fukuoka**

## American Depositary Receipts

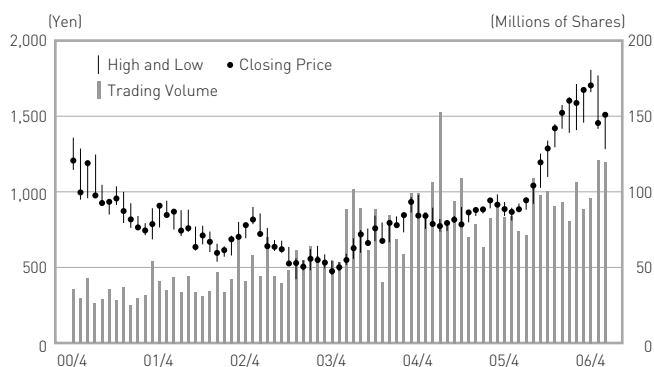
Ratio:	<b>1ADR:1ORD</b>	Depository and Registrar:	<b>CITIBANK, N.A. Shareholder Services P.O. Box 43077 Providence, Rhode Island 02940-3077, USA</b>
Exchange:	<b>OTC (Over-the-Counter)</b>	Toll Free Number:	<b>1-877-248-4237(CITI-ADR)</b>
Symbol :	<b>SSUMY</b>	Overseas Dial-In:	<b>1-816-843-4281</b>
CUSIP Number:	<b>865613103</b>	e-mail:	<b>citibank@shareholders-online.com</b>
		URL:	<b>http://www.citigroup.com/adr</b>

## Stock Index

Share price on April 30, 2000=100



## Stock Price and Trading Volume



		05/4	5	6	7	8	9	10	11	12	06/1	2	3	4	5	6
Stock Price	High	926	889	915	952	1,055	1,246	1,332	1,441	1,568	1,618	1,705	1,684	1,799	1,770	1,515
(Yen)	Low	834	804	863	878	914	1,020	1,093	1,288	1,410	1,384	1,401	1,450	1,652	1,417	1,280
Trading Volume		83,022	83,346	73,615	70,930	108,394	97,352	100,044	90,263	92,529	80,098	105,761	88,080	95,737	120,864	119,325

Note: Above stock prices and trading volume are based on Tokyo Stock Exchange data.

For further information contact:

---

**Sumitomo Corporation**  
**Investor Relations Department**

1-8-11, Harumi, Chuo-ku, Tokyo 104-8610, Japan

Telephone: 81(3)-5166-3522

Facsimile: 81(3)-5166-6292

e-mail: [ir@sumitomocorp.co.jp](mailto:ir@sumitomocorp.co.jp)

URL: <http://www.sumitomocorp.co.jp/english/>