

## CORPORATE INFORMATION (As of March 31, 2007)

---

Date of Establishment:	December 24, 1919
Consolidated Shareholders' Equity:	¥1,473.1 billion
Number of Consolidated Subsidiaries:	Overseas 453 Domestic 196
Associated Companies: (equity method)	Overseas 177 Domestic <u>72</u> Total 898
Fiscal Year:	From April 1 of each year through March 31 of the following year
Headquarters:	1-8-11, Harumi, Chuo-ku, Tokyo 104-8610, Japan
Number of Employees:	Total, including Consolidated Subsidiaries 61,490 Non-Consolidated 4,717

## STOCK INFORMATION (As of April 1, 2007)

---

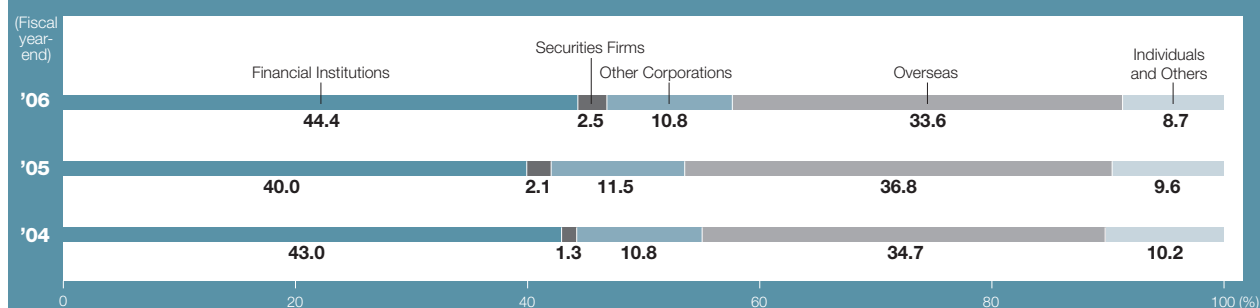
Stock Listings:	Tokyo, Osaka, Nagoya, Fukuoka
American Depository Receipts:	
Ratio:	1ADR:1ORD
Exchange:	OTC (Over-the-Counter)
Symbol:	SSUMY
CUSIP Number:	865613103
Depository and Registrar:	CITIBANK, N.A., Shareholder Services, P.O. Box 43077, Providence, Rhode Island 02940-3077, U.S.A.
Toll Free Number:	1-877-248-4237(CITI-ADR)
Overseas Dial-In:	1-816-843-4281
e-mail:	<a href="mailto:citibank@shareholders-online.com">citibank@shareholders-online.com</a>
URL:	<a href="http://www.citigroup.com/adr">http://www.citigroup.com/adr</a>

## Major Shareholders

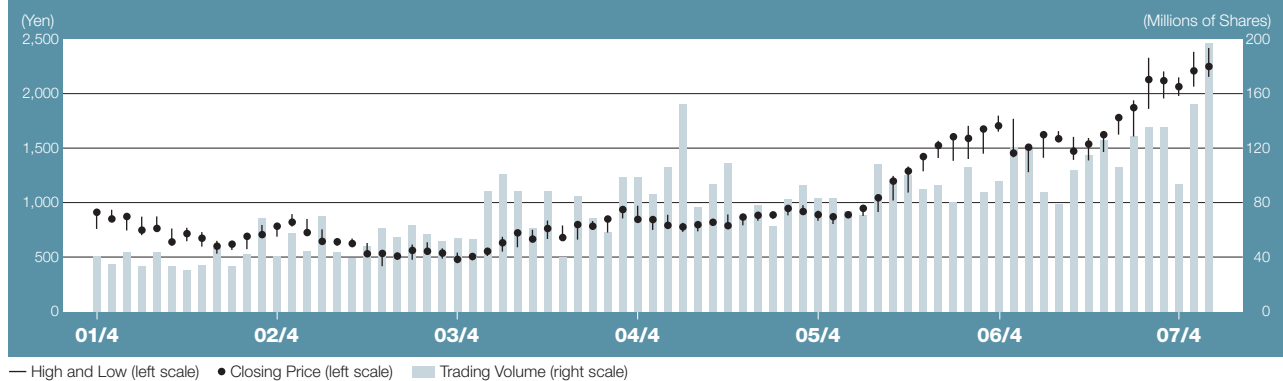
(As of March 31, 2007)

Name	Number of Shares (In Thousands of Shares)	Shareholding Ratio (%)
1. The Master Trust Bank of Japan, Ltd. (Trust Account)	108,597	8.68
2. Japan Trustee Services Bank, Ltd. (Trust Account)	93,110	7.45
3. Japan Trustee Services Bank, Ltd. (Trust Account 4)	40,329	3.22
4. Mitsui Sumitomo Insurance Co., Ltd.	33,227	2.66
5. Sumitomo Life Insurance Company	30,856	2.47
6. State Street Bank and Trust Company 505103	20,558	1.64
7. The Dai-ichi Mutual Life Insurance Company	17,889	1.43
8. Nippon Life Insurance Company	16,532	1.32
9. State Street Bank and Trust Company	16,183	1.29
10. Nomura Securities Co., Ltd.	15,696	1.26

## Shareholder Composition



## Stock Price and Trading Volume



		06/4	5	6	7	8	9	10	11	12	07/1	2	3	4	5	6
Stock Price (Yen)	Closing Price	1,706	1,455	1,509	1,624	1,587	1,473	1,538	1,624	1,781	1,872	2,130	2,120	2,065	2,210	2,250
	High	1,799	1,770	1,515	1,640	1,657	1,604	1,594	1,638	1,792	1,939	2,330	2,205	2,150	2,385	2,420
	Low	1,652	1,417	1,280	1,412	1,555	1,393	1,388	1,465	1,625	1,608	1,861	1,957	1,980	2,065	2,155
Trading Volume		95,737	120,864	119,325	87,835	79,275	104,153	114,975	126,024	105,870	129,069	135,675	135,420	93,920	152,210	197,472

Note: Above stock prices and trading volume are based on Tokyo Stock Exchange data.

For further information contact:

### Sumitomo Corporation

#### Investor Relations Department

1-8-11, Harumi, Chuo-ku, Tokyo 104-8610, Japan

Telephone: 81(3)-5166-3522

Facsimile: 81(3)-5166-6292

e-mail: [ir@sumitomocorp.co.jp](mailto:ir@sumitomocorp.co.jp)

URL: <http://www.sumitomocorp.co.jp/english/>