

CORPORATE INFORMATION (As of March 31, 2008)

Date of Establishment:	December 24, 1919
Consolidated Shareholders' Equity:	¥1,492.7 billion
Number of Consolidated Subsidiaries:	Overseas 424 Domestic 177
Associated Companies: (equity method)	Overseas 172 Domestic 60 <hr/> Total 833
Fiscal Year:	From April 1 of each year through March 31 of the following year
Headquarters:	1-8-11, Harumi, Chuo-ku, Tokyo 104-8610, Japan
Number of Employees:	Total, including Consolidated Subsidiaries 65,494 Non-Consolidated 4,795

STOCK INFORMATION (As of April 1, 2008)

Stock Listings:	Tokyo, Osaka, Nagoya, Fukuoka
American Depository Receipts:	
Ratio:	1ADR:1ORD
Exchange:	OTC (Over-the-Counter)
Symbol:	SSUMY
CUSIP Number:	865613103
Depository and Registrar:	CITIBANK, N.A., Shareholder Services, P.O. Box 43077, Providence, Rhode Island 02940-3077, U.S.A.
Toll Free Number:	1-877-248-4237(CITI-ADR)
Overseas Dial-In:	1-816-843-4281
e-mail:	citibank@shareholders-online.com
URL:	http://www.citigroup.com/adr

Major Shareholders

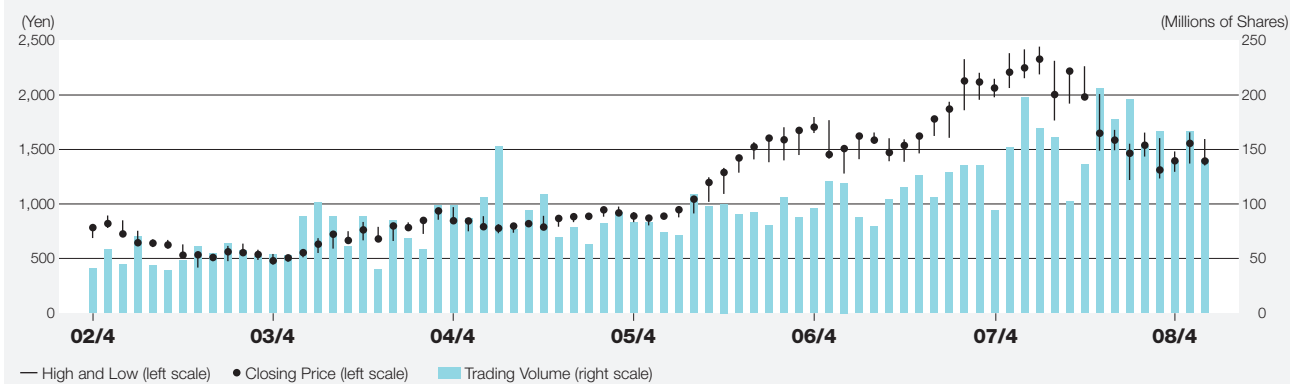
(As of March 31, 2008)

Name	Number of Shares (In Thousands of Shares)	Shareholding Ratio (%)
1. Japan Trustee Services Bank, Ltd. (Trust Account)	82,274	6.58
2. The Master Trust Bank of Japan, Ltd. (Trust Account)	77,727	6.22
3. Liberty Programming Japan, Inc.	45,652	3.65
4. Mitsui Sumitomo Insurance Co., Ltd.	33,227	2.66
5. Sumitomo Life Insurance Company	30,856	2.47
6. Japan Trustee Services Bank, Ltd. (Trust Account 4)	30,611	2.45
7. Sumitomo Metal Industries, Ltd.	18,243	1.46
8. The Dai-ichi Mutual Life Insurance Company	17,889	1.43
9. Nippon Life Insurance Company	16,532	1.32
10. State Street Bank and Trust Company 505103	14,824	1.19

Shareholder Composition



Stock Price and Trading Volume



		07/4	5	6	7	8	9	10	11	12	08/1	2	3	4	5	6
Stock Price	Closing Price	2,065	2,210	2,250	2,330	2,005	2,220	1,983	1,650	1,587	1,466	1,540	1,313	1,397	1,557	1,395
	High	2,150	2,385	2,420	2,445	2,315	2,230	2,265	2,010	1,681	1,554	1,656	1,605	1,483	1,658	1,597
	Low	1,980	2,065	2,155	2,190	1,767	1,922	1,960	1,490	1,494	1,221	1,436	1,235	1,296	1,372	1,354
Trading Volume		93,920	152,210	197,472	169,327	161,143	102,513	136,486	206,094	178,054	195,629	153,184	166,461	138,685	166,933	140,944

Note: Above stock prices and trading volume are based on Tokyo Stock Exchange data.

For further information contact:

Sumitomo Corporation

Investor Relations Department

1-8-11, Harumi, Chuo-ku, Tokyo 104-8610, Japan

Telephone: 81(3)-5166-3522

Facsimile: 81(3)-5166-6292

e-mail: ir@sumitomocorp.co.jp

URL: <http://www.sumitomocorp.co.jp/english/>