

CORPORATE INFORMATION (As of March 31, 2009)

Company Name:	Sumitomo Corporation
Date of Establishment:	December 24, 1919
Consolidated Shareholders' Equity:	¥1,353.1 billion
Number of Consolidated Subsidiaries:	557 (Overseas 402, Domestic 155)
Associated Companies: [equity method]	229 (Overseas 171, Domestic 58)
Total:	786
Fiscal Year:	From April 1 of each year through March 31 of the following year
Headquarters:	1-8-11, Harumi, Chuo-ku, Tokyo 104-8610, Japan
Number of Employees:	Total, including Consolidated Subsidiaries 70,755 Non-Consolidated 4,968

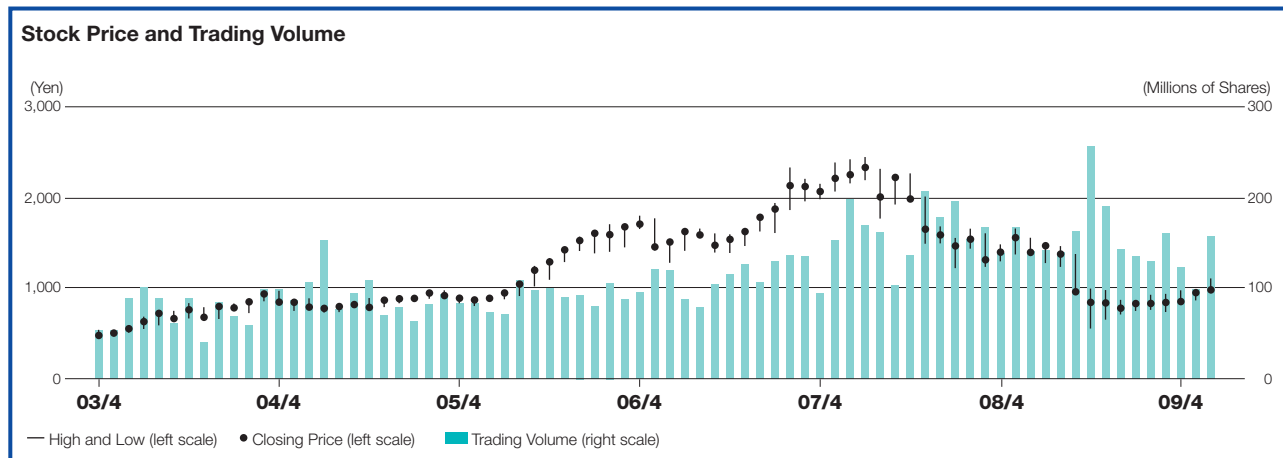
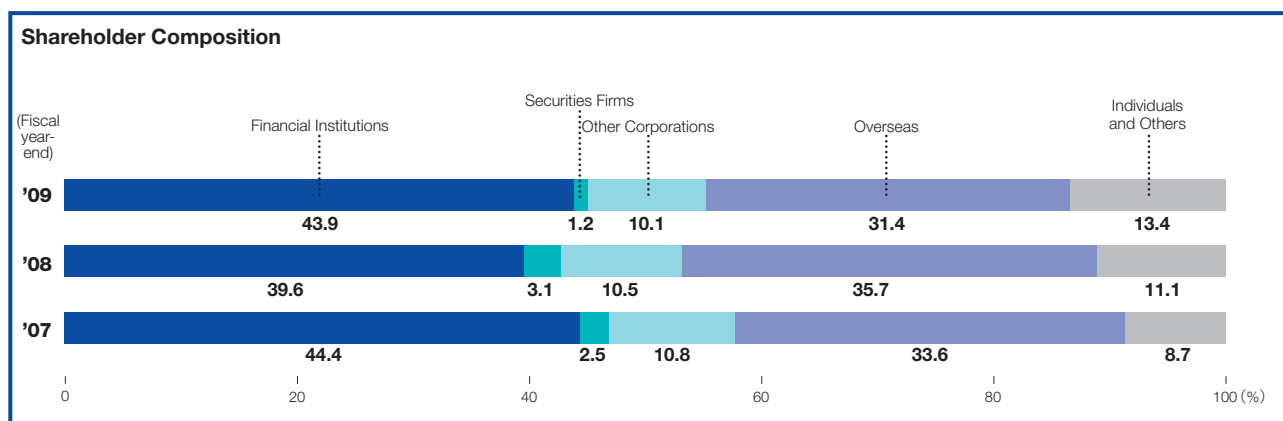
STOCK INFORMATION (As of April 1, 2009)

Stock Listings:	Tokyo, Osaka, Nagoya, Fukuoka
American Depository Receipts:	
Ratio:	1ADR:1ORD
Exchange:	OTC (Over-the-Counter)
Symbol:	SSUMY
CUSIP Number:	865613103
Depository and Registrar:	Citi Global Transaction Services Depository Receipts Services, P.O. Box 43077, Providence, Rhode Island 02940-3077, U.S.A.
Toll Free Number:	1-877-248-4237(CITI-ADR)
Overseas Dial-In:	1-781-575-4555
e-mail:	citibank@shareholders-online.com
URL:	http://www.citigroup.com/adr

Major Shareholders

(As of March 31, 2009)

Name	Number of Shares (In Thousands of Shares)	Shareholding Ratio (%)
1. Japan Trustee Services Bank, Ltd. (trust account)	93,316	7.46
2. The Master Trust Bank of Japan, Ltd. (trust account)	85,027	6.80
3. Japan Trustee Services Bank, Ltd. (trust account 4G)	76,881	6.15
4. Liberty Programming Japan, Inc.	45,652	3.65
5. Mitsui Sumitomo Insurance Co., Ltd.	33,227	2.66
6. Sumitomo Life Insurance Co.	30,855	2.47
7. Japan Trustee Services Bank, Ltd. (trust account 4)	24,397	1.95
8. Sumitomo Metal Industries, Ltd.	19,291	1.54
9. Nippon Life Insurance Co.	16,532	1.32
10. The Dai-ichi Mutual Life Insurance Co.	15,889	1.27



		08/4	5	6	7	8	9	10	11	12	09/1	2	3	4	5	6
Stock Price	Closing Price	1,397	1,557	1,395	1,468	1,376	961	844	838	780	831	832	843	853	951	982
	High	1,483	1,658	1,597	1,498	1,464	1,377	996	980	872	870	928	938	977	971	1,108
	Low	1,296	1,372	1,354	1,277	1,235	952	556	654	711	750	762	738	832	866	946
Trading Volume		138,685	166,933	140,944	141,311	139,748	162,979	256,297	190,014	142,272	135,405	129,944	160,707	122,963	98,634	156,898

Note: Above stock prices and trading volume are based on Tokyo Stock Exchange data.

For further information contact:

Sumitomo Corporation

Investor Relations Department

1-8-11, Harumi, Chuo-ku, Tokyo 104-8610, Japan

Telephone: 81(3)-5166-3522

Facsimile: 81(3)-5166-6292

e-mail: ir@sumitomocorp.co.jp

URL: <http://www.sumitomocorp.co.jp/english/>