

CORPORATE INFORMATION

(As of March 31, 2010)

■ Company Name:	Sumitomo Corporation
■ Date of Establishment:	December 24, 1919
■ Sumitomo Corporation Shareholders' Equity:	¥1,583.7 billion
■ Fiscal Year:	From April 1 of each year through March 31 of the following year
■ Number of Consolidated Subsidiaries:	566 (Overseas 420, Domestic 146)
■ Associated Companies [equity method]:	221 (Overseas 168, Domestic 53)
■ Total:	787
■ Number of Employees:	Total, including Consolidated Subsidiaries 72,030 Non-Consolidated 5,100
■ Headquarters:	1-8-11, Harumi, Chuo-ku, Tokyo 104-8610, Japan
■ URL:	http://www.sumitomocorp.co.jp/english/

STOCK INFORMATION

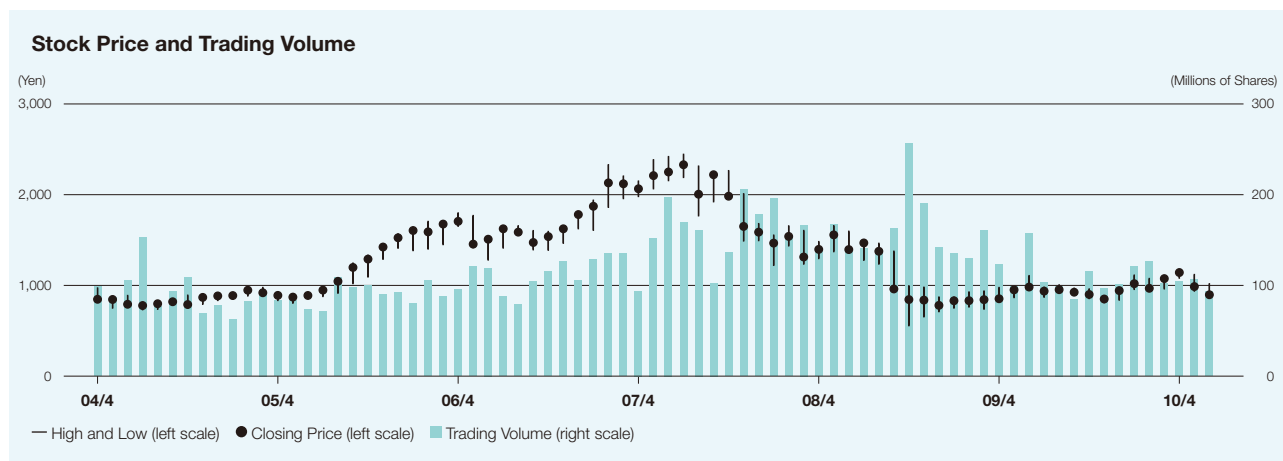
(As of April 1, 2010)

■ Stock Listings:	Tokyo, Osaka, Nagoya, Fukuoka
■ American Depository Receipts:	
Ratio:	1ADR:1ORD
Exchange:	OTC (Over-the-Counter)
Symbol:	SSUMY
CUSIP Number:	865613103
■ Depository and Registrar:	Citibank, N.A. Global Transaction Services Depository Receipts Services, P.O. Box 43077, Providence, Rhode Island 02940-3077, U.S.A.
Toll Free Number:	1-877-248-4237(CITI-ADR)
Overseas Dial-In:	1-781-575-4555
e-mail:	citibank@shareholders-online.com
URL:	http://www.citigroup.com/adr

Major Shareholders

(As of March 31, 2010)

Name	Number of Shares (In Thousands of Shares)	Shareholding Ratio (%)
1 The Master Trust Bank of Japan, Ltd. (trust account)	80,383	6.43
2 Japan Trustee Services Bank, Ltd. (trust account)	79,331	6.34
3 Liberty Programming Japan, Inc.	45,652	3.65
4 Mitsui Sumitomo Insurance Co., Ltd.	33,227	2.66
5 Sumitomo Life Insurance Co.	30,855	2.47
6 Japan Trustee Services Bank, Ltd. (trust account 9)	29,545	2.36
7 Sumitomo Metal Industries, Ltd.	19,291	1.54
8 Japan Trustee Services Bank, Ltd. (trust account 4)	18,119	1.45
9 Nippon Life Insurance Co.	16,532	1.32
10 The Dai-ichi Mutual Life Insurance Co.	15,889	1.27



		09/4	5	6	7	8	9	10	11	12	10/1	2	3	4	5	6
Stock Price (Yen)	Closing Price	853	951	982	937	953	925	900	850	943	1,019	968	1,075	1,142	987	897
	High	977	971	1,108	979	1,006	968	961	886	964	1,113	1,076	1,085	1,163	1,120	1,018
	Low	832	866	946	870	926	899	855	811	838	956	938	962	1,080	937	884
Trading Volume (in Thousands of Shares)		122,963	98,634	156,898	103,607	99,469	84,970	116,025	96,751	100,750	120,597	126,646	102,184	104,537	106,590	93,024

Note: Above stock prices and trading volume are based on Tokyo Stock Exchange data.

For further information contact:

Sumitomo Corporation

Investor Relations Department

1-8-11, Harumi, Chuo-ku, Tokyo 104-8610, Japan

Telephone: 81(3)-5166-3469

Facsimile: 81(3)-5166-6292

e-mail: ir@sumitomocorp.co.jp