

---

## CORPORATE INFORMATION

(As of March 31, 2011)

■ <b>Company Name:</b>	Sumitomo Corporation
■ <b>Date of Establishment:</b>	December 24, 1919
■ <b>Sumitomo Corporation Shareholders' Equity:</b>	¥1,619.9 billion
■ <b>Fiscal Year:</b>	From April 1 of each year through March 31 of the following year
■ <b>Number of Consolidated Subsidiaries:</b>	576 (Overseas 434, Domestic 142)
■ <b>Associated Companies [equity method]:</b>	216 (Overseas 161, Domestic 55)
■ <b>Total:</b>	792
■ <b>Number of Employees:</b>	Total, including Consolidated Subsidiaries 64,886 Non-Consolidated 5,159
■ <b>Headquarters:</b>	1-8-11, Harumi, Chuo-ku, Tokyo 104-8610, Japan
■ <b>URL:</b>	<a href="http://www.sumitomocorp.co.jp/english/">http://www.sumitomocorp.co.jp/english/</a>

---

## STOCK INFORMATION

(As of April 1, 2011)

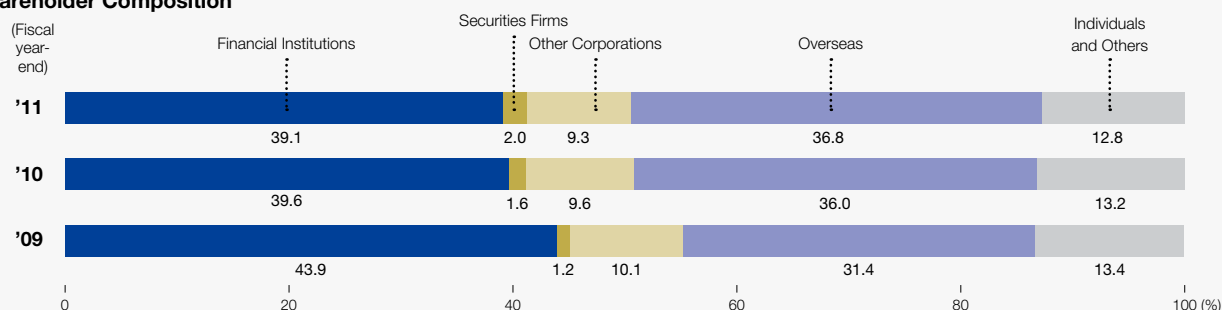
■ <b>Stock Listings:</b>	Tokyo, Osaka, Nagoya, Fukuoka
■ <b>American Depositary Receipts:</b>	
<b>Ratio:</b>	1ADR:1ORD
<b>Exchange:</b>	OTC (Over-the-Counter)
<b>Symbol:</b>	SSUMY
<b>CUSIP Number:</b>	865613103
■ <b>Depository and Registrar:</b>	Citibank, N.A. Global Transaction Services Depository Receipts Services, P.O. Box 43077, Providence, Rhode Island 02940-3077, U.S.A.
<b>Toll Free Number:</b>	1-877-248-4237(CITI-ADR)
<b>Overseas Dial-In:</b>	1-781-575-4555
<b>e-mail:</b>	<a href="mailto:citibank@shareholders-online.com">citibank@shareholders-online.com</a>
<b>URL:</b>	<a href="http://www.citigroup.com/adr">http://www.citigroup.com/adr</a>

## Major Shareholders

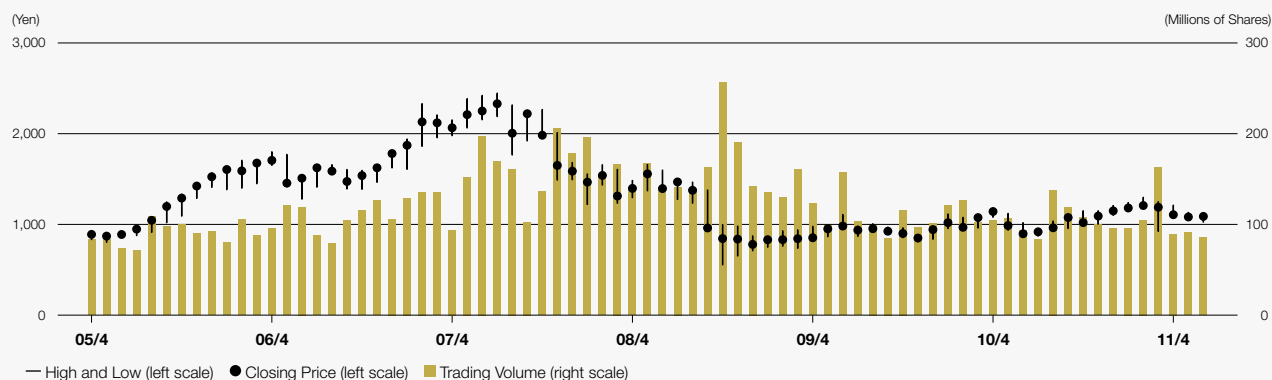
(As of March 31, 2011)

Name	Number of Shares (In Thousands of Shares)	Shareholding Ratio (%)
1 The Master Trust Bank of Japan, Ltd. (trust account)	76,619	6.13
2 Japan Trustee Services Bank, Ltd. (trust account)	74,037	5.92
3 Liberty Programming Japan, Inc.	45,652	3.65
4 Mitsui Sumitomo Insurance Company, Limited	33,227	2.66
5 Japan Trustee Services Bank, Ltd. (trust account 9)	31,726	2.54
6 Sumitomo Life Insurance Company	30,855	2.47
7 SSBT OD05 Omnibus Account-Treaty Clients	24,017	1.92
8 Japan Trustee Services Bank, Ltd. (trust account 4)	19,900	1.59
9 Sumitomo Metal Industries, Ltd.	19,291	1.54
10 Nippon Life Insurance Company	16,532	1.32

### Shareholder Composition



### Stock Price and Trading Volume



	10/4	5	6	7	8	9	10	11	12	11/1	2	3	4	5	6	
Stock Price (Yen)	Closing Price	1,142	987	897	918	963	1,076	1,020	1,092	1,149	1,181	1,208	1,189	1,107	1,082	1,089
	High	1,163	1,120	1,018	955	1,035	1,105	1,149	1,149	1,207	1,240	1,297	1,249	1,210	1,131	1,093
	Low	1,080	937	884	874	928	956	1,018	1,004	1,102	1,162	1,180	925	1,084	1,051	1,021
Trading Volume (in Thousands of Shares)	104,537	106,590	93,024	83,129	137,973	118,363	107,496	99,818	95,888	95,898	104,936	162,543	89,323	91,164	85,891	

Note: Above stock prices and trading volume are based on Tokyo Stock Exchange data.

➔ For further information contact:

**Sumitomo Corporation**  
Investor Relations Department

Telephone: 81(3)-5166-3469

Facsimile: 81(3)-5166-6292

e-mail: [ir@sumitomocorp.co.jp](mailto:ir@sumitomocorp.co.jp)