
CORPORATE INFORMATION

(As of March 31, 2012)

■ Company Name:	Sumitomo Corporation
■ Date of Establishment:	December 24, 1919
■ Sumitomo Corporation Shareholders' Equity:	¥1,689.1 billion
■ Fiscal Year:	From April 1 of each year through March 31 of the following year
■ Number of Consolidated Subsidiaries:	560 (Overseas 421, Domestic 139)
■ Associated Companies [equity method]:	230 (Overseas 176, Domestic 54)
■ Total:	790
■ Number of Employees:	Total, including Consolidated Subsidiaries 72,087 Non-Consolidated 5,185
■ Headquarters:	1-8-11, Harumi, Chuo-ku, Tokyo 104-8610, Japan
■ URL:	http://www.sumitomocorp.co.jp/english/

STOCK INFORMATION

(As of April 1, 2012)

■ Stock Listings:	Tokyo, Osaka, Nagoya, Fukuoka
■ American Depository Receipts:	
Ratio:	1ADR:1ORD
Exchange:	OTC (Over-the-Counter)
Symbol:	SSUMY
CUSIP Number:	865613103
■ Depository and Registrar:	Citibank, N.A. Global Transaction Services Depository Receipts Services, P.O. Box 43077, Providence, Rhode Island 02940-3077, U.S.A.
Toll Free Number:	1-877-248-4237 (CITI-ADR)
Overseas Dial-In:	1-781-575-4555
e-mail:	citibank@shareholders-online.com
URL:	http://www.citigroup.com/adr

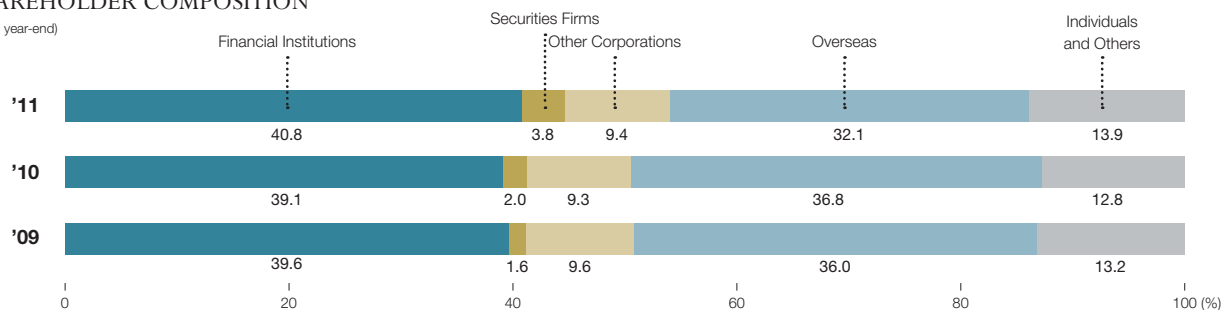
Major Shareholders

(As of March 31, 2012)

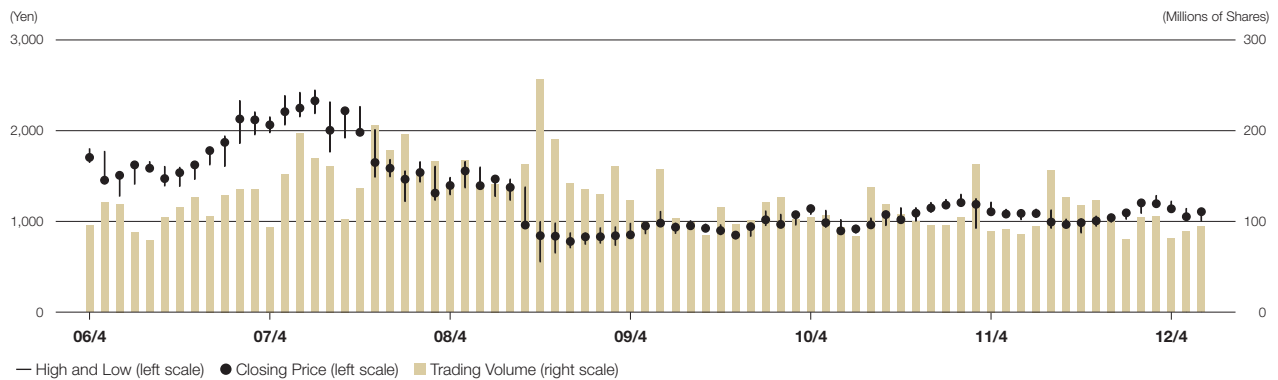
Name	Number of Shares (In Thousands of Shares)	Shareholding Ratio (%)
1 Japan Trustee Services Bank, Ltd. (trust account)	88,419	7.07
2 The Master Trust Bank of Japan, Ltd. (trust account)	86,702	6.94
3 Liberty Programming Japan, Inc.	45,652	3.65
4 Mitsui Sumitomo Insurance Company, Limited	33,227	2.66
5 Sumitomo Life Insurance Company	30,855	2.47
6 SSBT OD05 Omnibus Account-Treaty Clients	29,348	2.35
7 Japan Trustee Services Bank, Ltd. (trust account 9)	28,630	2.29
8 Sumitomo Metal Industries, Ltd.	19,291	1.54
9 Nippon Life Insurance Company	16,532	1.32
10 Barclays Capital Japan Limited	15,985	1.28

SHAREHOLDER COMPOSITION

(Fiscal year-end)



STOCK PRICE AND TRADING VOLUME



		11/4	5	6	7	8	9	10	11	12	12/1	2	3	4	5	6
Stock Price (Yen)	Closing Price	1,107	1,082	1,089	1,088	994	967	987	1,007	1,042	1,095	1,205	1,196	1,140	1,053	1,108
	High	1,210	1,131	1,093	1,133	1,124	1,023	1,025	1,056	1,076	1,119	1,218	1,284	1,221	1,141	1,123
	Low	1,084	1,051	1,021	1,073	926	935	875	949	994	1,026	1,091	1,159	1,114	1,034	1,006
Trading Volume (in Thousands of Shares)		89,323	91,164	85,890	94,818	156,149	126,528	117,237	123,071	104,787	80,165	104,084	105,445	80,876	89,184	94,738

Note: Above stock prices and trading volume are based on Tokyo Stock Exchange data.

---> For further information contact:

Sumitomo Corporation
Investor Relations Department

Telephone: 81(3)-5166-3469

Facsimile: 81(3)-5166-6292

e-mail: ir@sumitomocorp.co.jp