

## Corporate Profile

(As of March 31, 2018)

### Sumitomo Corporation

|                                       |  |
|---------------------------------------|--|
| Establishment Date:                   | December 24, 1919  |
| Paid-in Capital:                      | ¥219.3 billion   |
| Fiscal Year:                          | From April 1 of each year through March 31 of the following year                     |
| Number of Consolidated Subsidiaries:  | 654 (Overseas 562, Domestic 92)  |
| Associated Companies [Equity Method]: | 293 (Overseas 242, Domestic 51)  |
| Total:                                | 947  |
| Number of Employees:                  | 5,261* (Consolidated Base: 73,016)   |
| Head Office (As of October 1, 2018):  | OTEMACHI PLACE EAST TOWER 3-2 Otemachi 2-Chome, Chiyoda-ku,<br>Tokyo 100-8601, Japan |
| URL:                                  | <a href="http://www.sumitomocorp.com">http://www.sumitomocorp.com</a>                |

\* It includes 170 persons whom overseas offices of the Company employ.

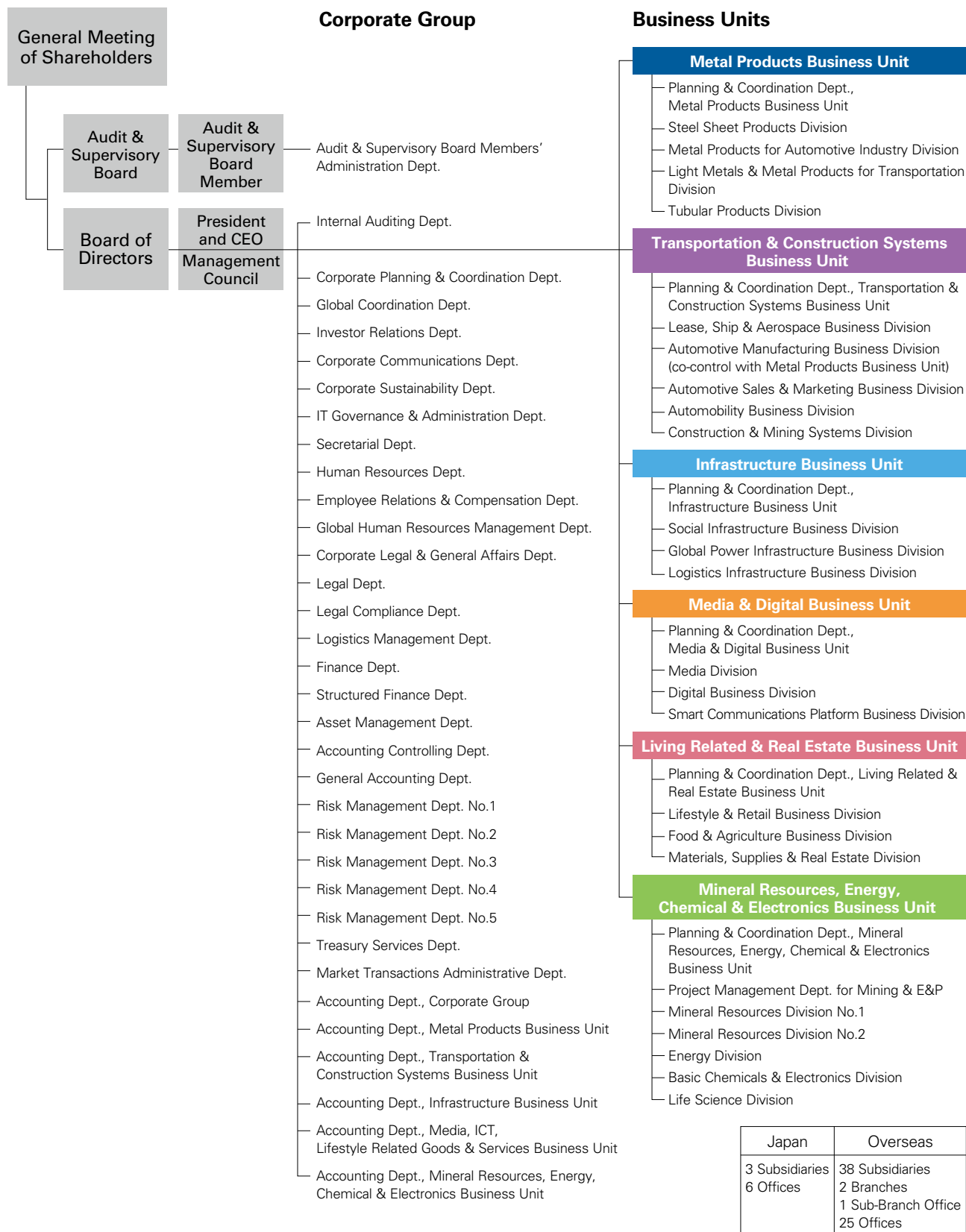
## Stock Information

(As of March 31, 2018)

|                                 |   |
|---------------------------------|---|
| Stock Listings:                 | Tokyo, Nagoya and Fukuoka   |
| Securities Identification Code: | 8053  |
| American Depository Receipts:   | Ratio: 1ADR:1ORD<br>Exchange: OTC (Over-the-Counter)<br>Symbol: SSUMY<br>CUSIP Number: 865613103            |
| Depository and Registrar:       | Citibank, N.A. Depository Receipts Services, P.O. Box 43077,<br>Providence, Rhode Island 02940-3077, U.S.A. |
| Toll Free Number:               | 1-877-248-4237 (CITI-ADR)   |
| Overseas Dial-in:               | 1-781-575-4555  |
| E-mail:                         | <a href="mailto:citibank@shareholders-online.com">citibank@shareholders-online.com</a>                      |
| URL:                            | <a href="http://www.citi.com/adr">http://www.citi.com/adr</a>   |

# Organization

(As of October 1, 2018)



# IR/SR Activities

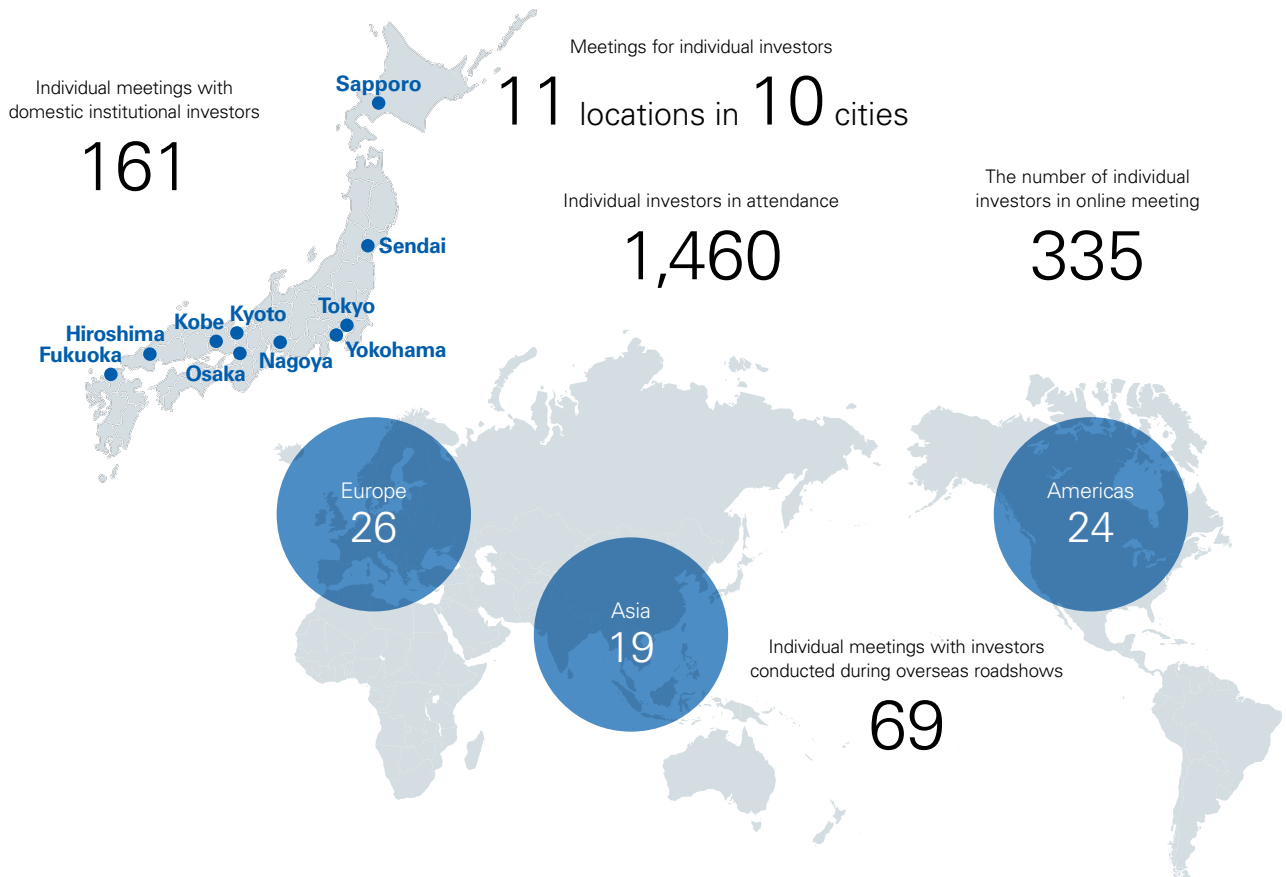
(As of March 31, 2018)

We facilitate direct communication with shareholders and other investors, in addition to enhancing disclosure on our website. An executive officer with responsibility for dialogue with shareholders and other investors exercises overall control of and coordinates such IR\* initiatives shown below. Also, related in-house departments contribute to IR initiatives by distributing information and collecting feedback from shareholders and other investors. Going forward, the Company will continue to increase the transparency of its management, implementing fair disclosure at all times, integrating financial and non-financial information, and strengthening relationships of trust with shareholders and investors by displaying initiatives to increase the corporate value of the Sumitomo Corporation Group over the medium to long term.

\*IR: Investor Relations SR: Shareholder Relations

## Fiscal 2017 IR/SR Activities

|  | April | May                            | June                            | July | August                               | September | October  | November                            | December | January | February                            | March  |
|--|-------|--------------------------------|---------------------------------|------|--------------------------------------|-----------|--|-------------------------------------|----------|---------|-------------------------------------|--|
|  |       | Announcement of annual results |                                 |      | Announcement of 1st quarter results  |           |  | Announcement of semi-annual results |          |         | Announcement of 3rd quarter results |  |
|  |       |                                | General meeting of shareholders |      | Publication of the integrated report |           |  |                                     |          |         |                                     |  |
| For individual investors                 |       |                                |                                 |      | Meetings for individual investors    |           |  |                                     |          |         |                                     | Online meeting for individual investors                                  |
| For analysts and institutional investors |       | Overseas IR roadshows          |                                 |      |                                      |           |  | Overseas IR roadshows               |          |         |                                     | Overseas SR roadshow   |
|  |       |                                |                                 |      |                                      |           | Site tour (Jupiter Shop Channel)               |                                     |          |         |                                     | Site tour (Myanmar telecommunication business, industrial park business) |
|  |       |                                |                                 |      |                                      |           | Meeting for exchanges of opinion regarding ESG |                                     |          |         |                                     |  |



## Editorial Policy

---

### Scope of the Report

- ▶ Period covered: April 1, 2017, to March 31, 2018  
(Some activities starting on or after April 1, 2018, are included.)
- ▶ Organizations covered: Sumitomo Corporation and the Sumitomo Corporation Group
- ▶ Previous publication: July 2017
- ▶ Next publication: Summer 2019

### Referenced Guidelines

- ▶ The International Integrated Reporting Council (IIRC)  
International Framework for Integrated Reporting
- ▶ ISO 26000 (Guidance on Social Responsibility)
- ▶ Charter of Corporate Behavior (September 14, 2010),  
Nippon Keidanren (Japan Business Federation)
- ▶ “Environmental Reporting Guidelines 2012,” issued by  
Ministry of the Environment, Government of Japan

### Cautionary Note Regarding Forward-Looking Statements

This report contains management targets relating to “Medium-Term Management Plan 2020” as well as a wide range of other forward-looking statements. The statements refer to goals which the Company management seeks to attain through the successful implementation of the plan and reflect assumptions and forecasts relating to future events which are made at the present time based on the data currently available to the Company. As such, they are subject to the influence of a range of factors in the Company’s circumstances going forward and do not constitute a guarantee of future business performance or a guarantee that the targets and forecasts will be met. Readers are therefore advised to avoid placing undue reliance on the forward-looking statements contained herein and to be aware that the Company recognizes no obligation to update or revise such statements.

#### For further information, please contact:

Sumitomo Corporation  
Investor Relations Department  
Telephone: +81 (3)-6285-3469 Fax: +81 (3)-6285-6292  
E-mail: [ir@sumitomocorp.com](mailto:ir@sumitomocorp.com)