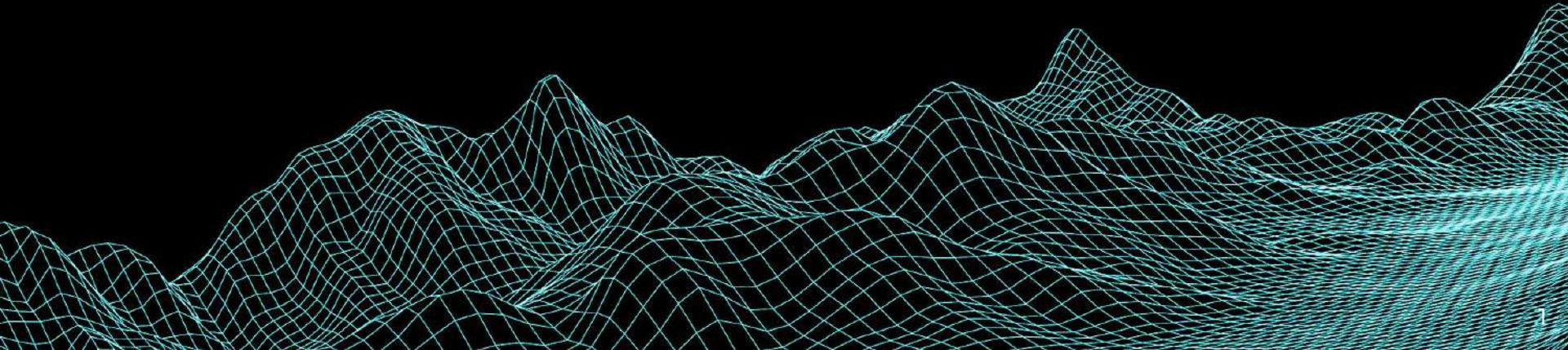


EARTHNET

AI for **Geoscientists** built by **Geoscientists**



About **ESA**



Earth Science Analytics develops cloud-native software that helps geoscientists improve their working life with data-driven machine learning tools.



Our proprietary software package, **EarthNET**, is the first platform that is truly fit for purpose and provides the ability to carry out AI-assisted workflows for geoscientists.



ESA has offices in Norway (Oslo, Stavanger, Bergen), UK (London) and Greece (Athens).

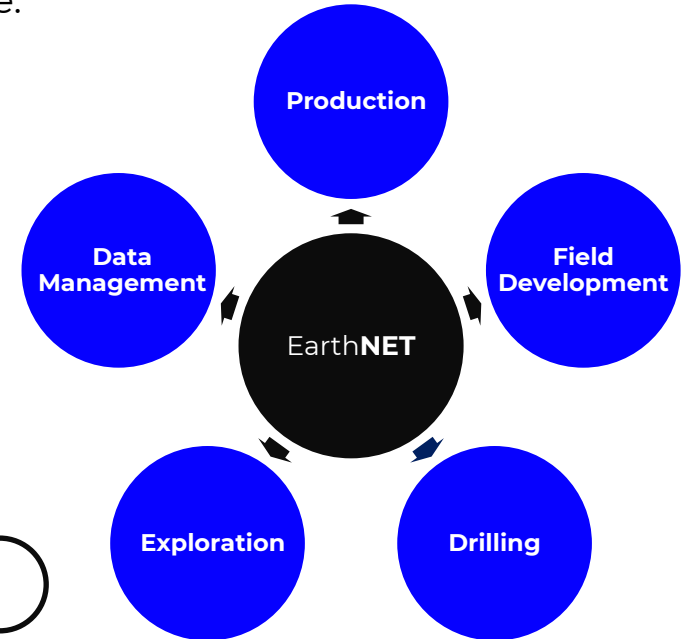


ESA team consists of 34 staff, of which, 30 are highly skilled practitioners in Geoscience and Computer Science.

EarthNET value proposition

EarthNET helps you save time, reduce cost and add value.

- 1 It is cloud-native
- 2 It is web-based and user-friendly
- 3 It is based on the cutting edge technology
- 4 And finally, it is a tool for Generalists as well as Specialists



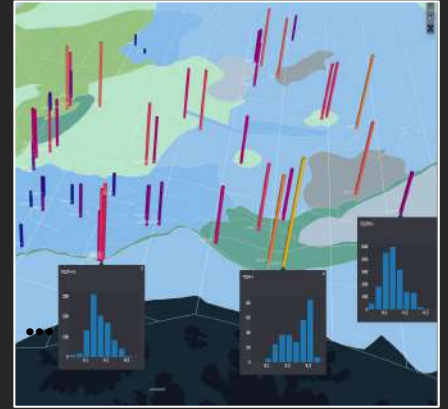
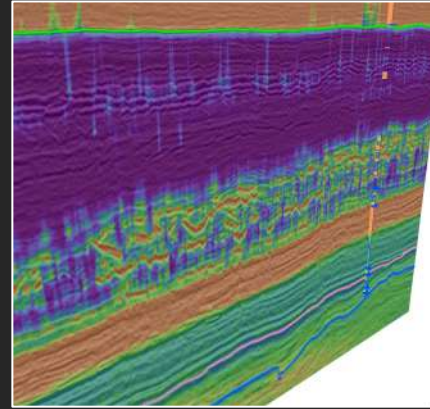
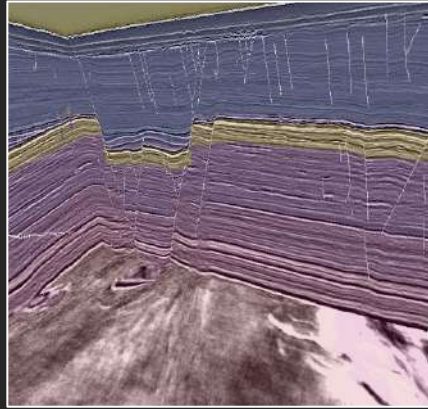
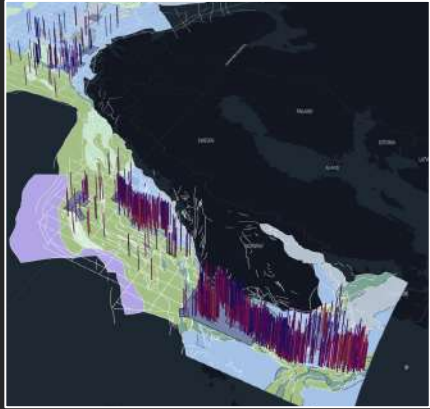
EARTHNET platform

EARTHNET

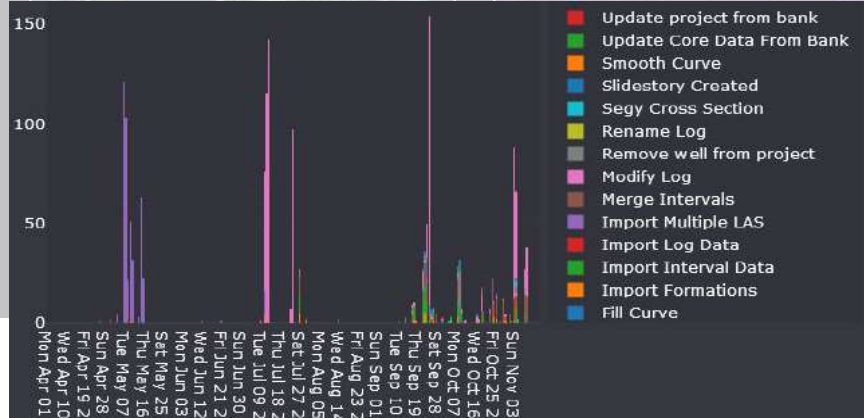
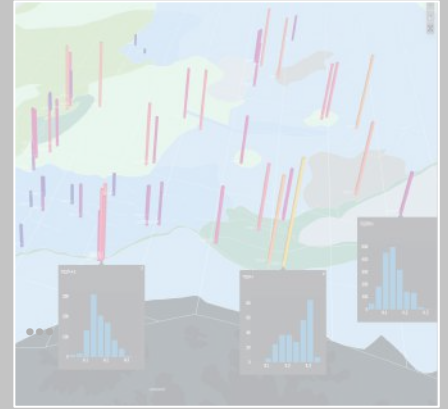
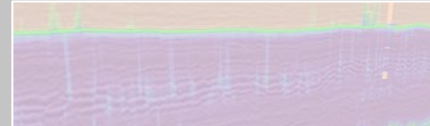
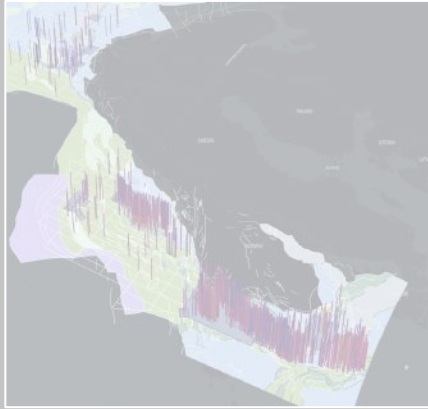
EARTH BANK	EARTH VIEW	EARTH AI				EARTH INSIGHT
		Wells	Seismic	Volumetric	...	
Centralized database for public, private and purchased data.	Data viewer e.g. well data, seismic, core etc.	Well based analysis e.g. property prediction, lithofacies clsf. etc.	Seismic based analysis e.g. automated interp., welltie, channel detection etc.	3D reservoir property prediction with well and seismic data powered by machine learning		Quantitative decision support suite.



Earth**NET** collaborative environment



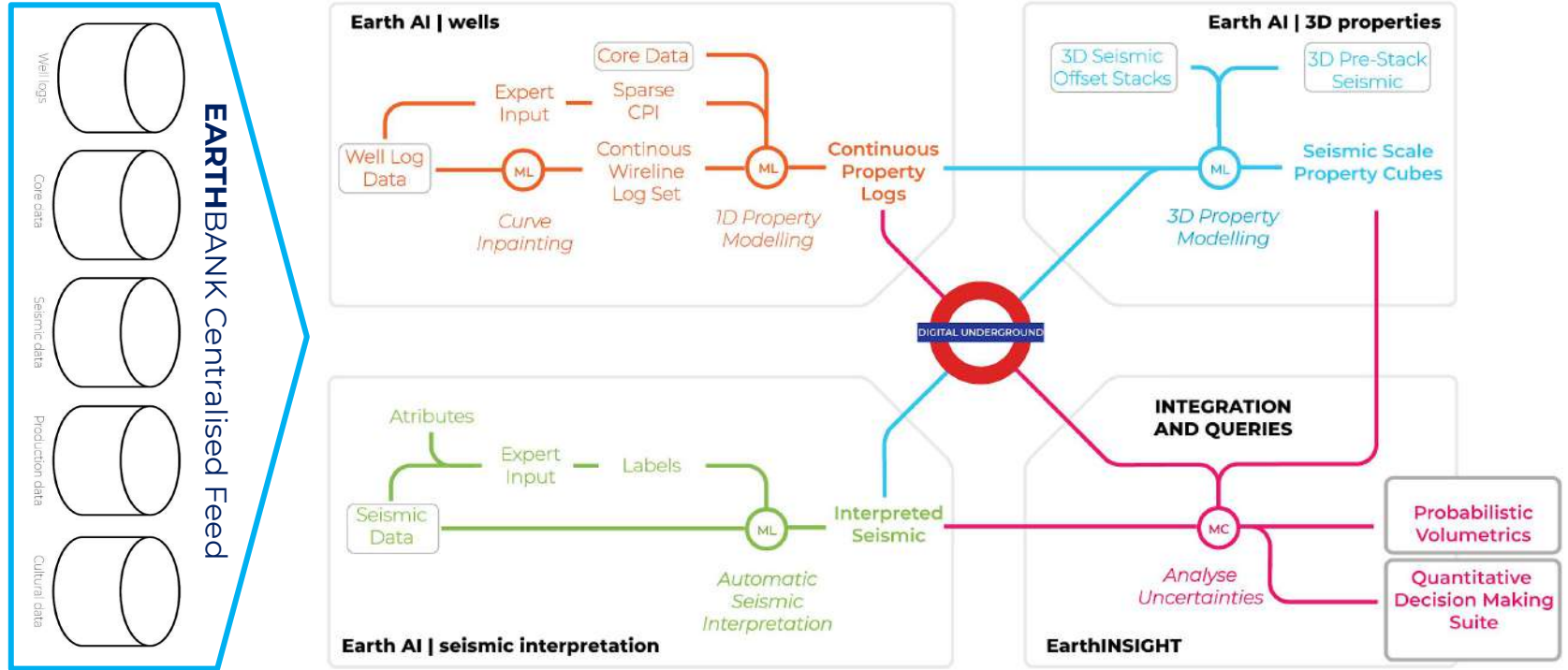
EarthNET collaborative environment



Track users and activities in real time!



An example quantitative workflow



An example **quantitative workflow**

