

Corporate Profile

(As of March 31, 2015)

Sumitomo Corporation

Date of Establishment: December 24, 1919

Sumitomo Corporation Shareholders' Equity:
¥2,481.4 billion

Fiscal Year: From April 1 of each year through
March 31 of the following year

Number of Consolidated Subsidiaries:
596 (Overseas 487, Domestic 109)

Associated Companies [Equity Method]:
266 (Overseas 215, Domestic 51)

Total: 862

Number of Employees: Total, including Consolidated
Subsidiaries 75,448
Non-consolidated 5,371*

Headquarters: 1-8-11, Harumi, Chuo-ku, Tokyo
104-8610, Japan

URL: <http://www.sumitomocorp.co.jp/english/>

* Including the 163 employees employed at overseas offices

Stock Information

(As of March 31, 2015)

Stock Listings: Tokyo, Nagoya, Fukuoka

American Depository Receipts:
Ratio: 1ADR:1ORD
Exchange: OTC (Over-the-Counter)
Symbol: SSUMY
CUSIP Number: 865613103

Depository and Registrar:
Citibank, N.A. Depository Receipts
Services, P.O. Box 43077, Providence,
Rhode Island 02940-3077, U.S.A.

Toll Free Number: 1-877-248-4237 (CITI-ADR)

Overseas Dial-in: 1-781-575-4555

E-mail: citibank@shareholders-online.com

URL: <http://www.citi.com/adr>

Stock Information (As of March 31, 2015)

Number of Issued Shares: 1,250,602,867 (including 2,789,578 treasury shares)

Number of Shareholders: 167,087

Major Shareholders

Name	Number of Shares (Thousands of Shares)	Shareholding Ratio (%)
1 The Master Trust Bank of Japan, Ltd. (trust account)	65,422	5.24
2 Japan Trustee Services Bank, Ltd. (trust account)	55,647	4.46
3 Liberty Programming Japan, LLC	45,652	3.66
4 JP Morgan Chase Bank 385632	36,761	2.95
5 Sumitomo Life Insurance Company	30,855	2.47
6 Mitsui Sumitomo Insurance Company, Limited	27,227	2.18
7 Barclays Securities Japan Limited	20,000	1.60
8 Japan Trustee Services Bank, Ltd. (trust account 4)	19,274	1.54
9 Japan Trustee Services Bank, Ltd. (trust account 9)	17,569	1.41
10 The Bank of New York Mellon SA/NV 10	15,989	1.28

Note: The shareholding ratio is calculated by dividing the number of shares held by the number of shares outstanding—which is derived by deducting treasury stock (2,789,578 shares) from the total number of issued shares—and rounding to the nearest hundredth of a percent.

Shareholder Composition

(Fiscal year-end)



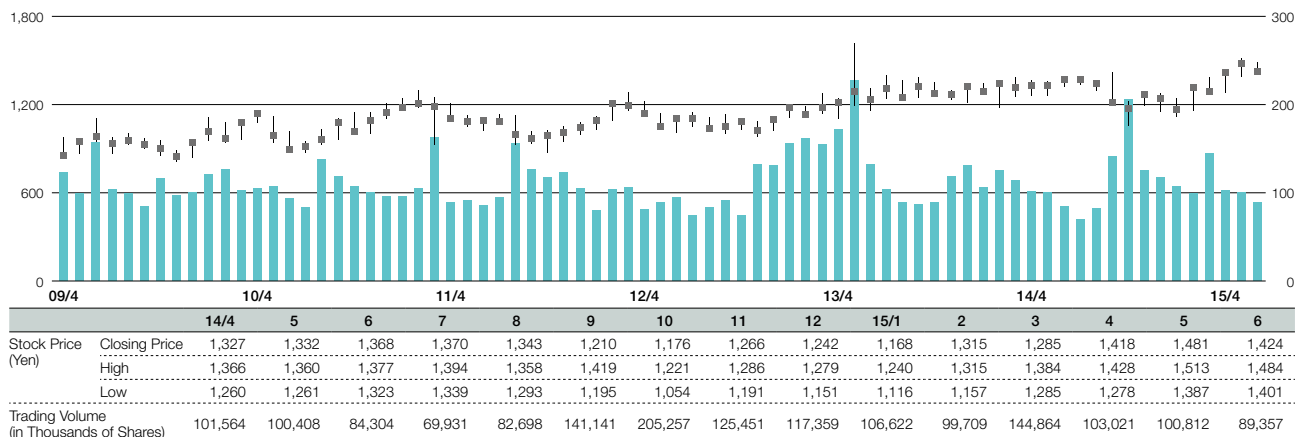
Stock Price and Trading Volume

(Yen)

■ High and Low (left) ■ Closing Price (left)

(Millions of shares)

■ Trading Volume (right)



Note: The above stock prices and trading volume are based on Tokyo Stock Exchange data.

For further information, contact:
 Sumitomo Corporation
 Investor Relations Department
 Telephone: +81 (3)-5166-3469
 Facsimile: +81 (3)-5166-6292
 E-mail: ir@sumitomocorp.com