

## Corporate Profile

(As of March 31, 2016)

### Sumitomo Corporation

**Date of Establishment:** December 24, 1919

**Sumitomo Corporation Shareholders' Equity:**  
¥2,251.5 billion

**Fiscal Year:** From April 1 of each year through  
March 31 of the following year

**Number of Consolidated Subsidiaries:**  
577 (Overseas 474, Domestic 103)

**Associated Companies [Equity Method]:**  
269 (Overseas 220, Domestic 49)

**Total:** 846

**Number of Employees:** Total, including Consolidated  
Subsidiaries 66,860  
Non-consolidated 5,389\*

**Head Office:** 1-8-11, Harumi, Chuo-ku, Tokyo  
104-8610, Japan

**URL:** <http://www.sumitomocorp.co.jp/english/>

\* Including the 185 employees employed at overseas offices

## Stock Information

(As of March 31, 2016)

**Stock Listings:** Tokyo, Nagoya, Fukuoka

**American Depository Receipts:**  
Ratio: 1ADR:1ORD  
Exchange: OTC (Over-the-Counter)  
Symbol: SSUMY  
CUSIP Number: 865613103

**Depository and Registrar:**  
Citibank, N.A. Depository Receipts  
Services, P.O. Box 43077, Providence,  
Rhode Island 02940-3077, U.S.A.

**Toll Free Number:** 1-877-248-4237 (CITI-ADR)

**Overseas Dial-in:** 1-781-575-4555

**E-mail:** [citibank@shareholders-online.com](mailto:citibank@shareholders-online.com)

**URL:** <http://www.citi.com/adr>

**Number of Issued Shares:** 1,250,602,867 (including 2,506,842 treasury stock)

**Number of Shareholders:** 178,173

**Major Shareholders**

Name	Number of Shares (Thousands of Shares)	Shareholding Ratio (%)
1 The Master Trust Bank of Japan, Ltd. (trust account)	70,630	5.66
2 Japan Trustee Services Bank, Ltd. (trust account)	59,102	4.74
3 Liberty Programming Japan, LLC	45,652	3.66
4 JP Morgan Chase Bank 385632	41,147	3.30
5 Sumitomo Life Insurance Company	30,855	2.47
6 Mitsui Sumitomo Insurance Company, Limited	20,886	1.67
7 Barclays Securities Japan Limited	20,000	1.60
8 Japan Trustee Services Bank, Ltd. (trust account 9)	17,859	1.43
9 The Dai-ichi Life Insurance Company, Limited	15,889	1.27
10 Japan Trustee Services Bank, Ltd. (trust account 7)	15,749	1.26

Note: The shareholding ratio is calculated by dividing the number of shares held by the number of shares outstanding—which is derived by deducting treasury stock (2,506,842 shares) from the total number of issued shares—and rounding to the nearest hundredth of a percent.

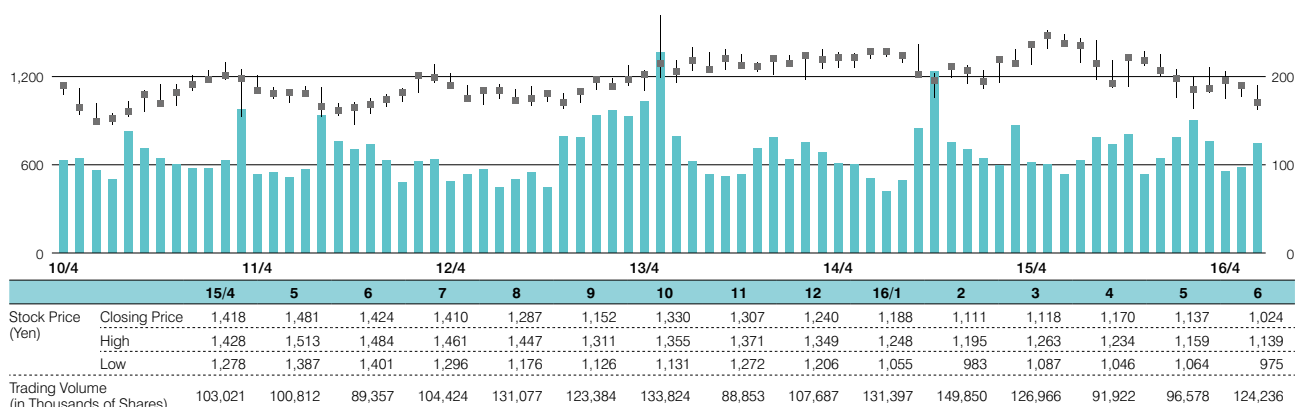
**Shareholder Composition**

(Fiscal year-end)



**Stock Price and Trading Volume**

(Yen) — High and Low (left) ■ Closing Price (left) (Millions of shares) ■ Trading Volume (right)



Note: The above stock prices and trading volume are based on Tokyo Stock Exchange data.